

Recombinant Mouse CFP Protein (23-464 aa), His-tagged

Cat. No. CFP-2152M Lot. No. (See product label)

SPECIFICATION

Product Overview	Recombinant Mouse CFP Protein (23-464 aa) is produced by Yeast expression system. This protein is fused with a 6xHis tag at the N-terminal. Research Area: Immunology. Protein Description: Full Length of Mature Protein.
Species	Mouse
Source	Yeast
ProteinLength	23-464 aa
Description	A positive regulator of the alternate pathway of complement. It binds to and stabilizes the C3- and C5-convertase enzyme complexes.
Form	Tris-based buffer,50% glycerol
Molecular Mass	49.9 kDa
AA Sequence	SDPVLCFTQYEESSGRCKGLLGRDIRVEDCCLNAAYAFQEHDGGLCQACRSPQWS AWSLWGPCSVTCSEGSQLRHRRRCVGRGGQCSENVAPGTLEWQLQACEDQPCCP EMGGWSEWGPWGPCSVTCSKGTQIRQRVCDNPAPKCGGHCPGEAQQSQACDTQ KTCPTHGAWASWGPWSPCSGSLGGAQEPKETRSRSCSAPAPSHQPPGKPCSG PAYEHKACSGLPVAGGWGPWSPLSPCSVTCLGQTLQRTCDHPAPRHGGP FCAGDATRNQMCNKAVPCPVNGEWEAWGKWSDCSRLRMSINCEGTPGQQSRSR SCGGRKFNGKPCAGKLQDIRHCYNIHNCIMKGSWSQWSTWSLCTPPCSPNATRVR QRLCTPLLPKYPTVSMVEGQGEKNVTFWGTTPRPLCEALQGQKLVVEEKRSCLHV

 Tel: 1-631-559-9269 1-516-512-3133

 Email: info@creative-biomart.com  Fax: 1-631-938-8127

 45-1 Ramsey Road, Shirley, NY 11967, USA

	PVCKDPEEKKP
Purity	> 90% as determined by SDS-PAGE.
Notes	Repeated freezing and thawing is not recommended. Store working aliquots at 4 centigrade for up to one week.
Storage	The shelf life is related to many factors, storage state, buffer ingredients, storage temperature and the stability of the protein itself. Generally, the shelf life of liquid form is 6 months at -20 centigrade/-80 centigrade. The shelf life of lyophilized form is 12 months at -20 centigrade/-80 centigrade.
Concentration	A hardcopy of COA with reconstitution instruction is sent along with the products.

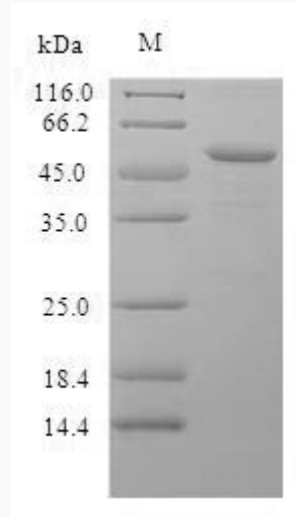
GENE INFORMATION

Gene Name	Cfp complement factor properdin [<i>Mus musculus</i>]
Official Symbol	CFP
Synonyms	CFP; complement factor properdin; properdin; complement factor P; Pfc; BCFG;
Gene ID	18636
mRNA Refseq	NM_008823
Protein Refseq	NP_032849
UniProt ID	P11680

 Tel: 1-631-559-9269 1-516-512-3133

 Email: info@creative-biomart.com  Fax: 1-631-938-8127

 45-1 Ramsey Road, Shirley, NY 11967, USA



(Tris-Glycine gel) Discontinuous SDS-PAGE (reduced) with 5% enrichment gel and 15% separation gel.

 Tel: 1-631-559-9269 1-516-512-3133

 Email: info@creative-biomart.com  Fax: 1-631-938-8127

 45-1 Ramsey Road, Shirley, NY 11967, USA