

# Recombinant Mycobacterium Tuberculosis CFP2 Protein (49-168 aa), His-tagged

**Cat. No.** CFP2-1626M    **Lot. No.** (See product label)

## SPECIFICATION

<b>Product Overview</b>	Recombinant Mycobacterium Tuberculosis (strain CDC 1551/Oshkosh) CFP2 Protein (49-168 aa) is produced by Yeast expression system. This protein is fused with a 6xHis tag at the N-terminal. Protein Description: Full Length of Mature Protein.
<b>Species</b>	Mycobacterium Tuberculosis
<b>Source</b>	Yeast
<b>ProteinLength</b>	49-168 aa
<b>Description</b>	May play a role in the development of protective immune responses.
<b>Form</b>	Tris-based buffer,50% glycerol
<b>Molecular Mass</b>	14.1 kDa
<b>AA Sequence</b>	DPASAPDVPTAAQLTSLNLSLADPNVSFANKGSLVEGGIGGTEARIADHKLKKA AEH GDLPLSFSVTNIQPA AAGSATADVSVSGPKLSSPVTQNVTFVNQGGWMLSRASAME LLQAAGN
<b>Purity</b>	> 90% as determined by SDS-PAGE.
<b>Notes</b>	Repeated freezing and thawing is not recommended. Store working aliquots at 4 centigrade for up to one week.

 Tel: 1-631-559-9269    1-516-512-3133

 Email: [info@creative-biomart.com](mailto:info@creative-biomart.com)     Fax: 1-631-938-8127

 45-1 Ramsey Road, Shirley, NY 11967, USA

**Storage**

The shelf life is related to many factors, storage state, buffer ingredients, storage temperature and the stability of the protein itself. Generally, the shelf life of liquid form is 6 months at -20 centigrade/-80 centigrade. The shelf life of lyophilized form is 12 months at -20 centigrade/-80 centigrade.

**Concentration**

A hardcopy of COA with reconstitution instruction is sent along with the products.

## GENE INFORMATION

**Gene Name**

[cfp2 low molecular weight antigen MTB12 \[ Mycobacterium tuberculosis H37Rv \]](#)

**Official Symbol**

[CFP2](#)

**Synonyms**

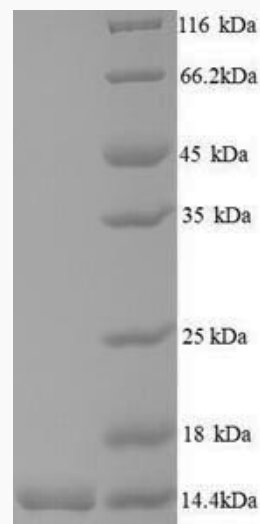
mtb12;

**Gene ID**

[885515](#)

**UniProt ID**

[P9WIN6](#)



 Tel: 1-631-559-9269 1-516-512-3133

 Email: [info@creative-biomart.com](mailto:info@creative-biomart.com)  Fax: 1-631-938-8127

 45-1 Ramsey Road, Shirley, NY 11967, USA



(Tris-Glycine gel) Discontinuous SDS-PAGE (reduced) with 5% enrichment gel and 15% separation gel.

 Tel: 1-631-559-9269 1-516-512-3133

 Email: [info@creative-biomart.com](mailto:info@creative-biomart.com)  Fax: 1-631-938-8127

 45-1 Ramsey Road, Shirley, NY 11967, USA