

Recombinant Mycobacterium Tuberculosis CFP21 Protein (33-217 aa), His-SUMO-Myc-tagged

Cat. No. CFP21-2292M Lot. No. (See product label)

SPECIFICATION

Product Overview	Recombinant Mycobacterium Tuberculosis (strain ATCC 25618/H37Rv) CFP21 Protein (33-217 aa) is produced by E. coli expression system. This protein is fused with a 10xHis-SUMO tag at the N-terminal and a Myc tag at the C-terminal. Protein Description: Full Length of Mature Protein.
Species	Mycobacterium Tuberculosis
Source	E.coli
ProteinLength	33-217 aa
Form	Tris-based buffer,50% glycerol
Molecular Mass	38.7 kDa
AA Sequence	DPCSDIAVVFARGTHQASGLGDVGEAFVDSLTSQVGGRSIGVYAVNYPASDDYRAS ASNGSDDASAHIQRTVASCPNTRIVLGGYSQGATVIDLSTSAMP PAVADHVA AVALF GEPSSGFSSMLWGGGSLPTIGPLYSSKTINLCPDDPICTGGGNIMAHVSYVQSGM TSQAATFAANRLDHAG
Purity	> 90% as determined by SDS-PAGE.
Notes	Repeated freezing and thawing is not recommended. Store working aliquots at 4 centigrade for up to one week.

 Tel: 1-631-559-9269 1-516-512-3133

 Email: info@creative-biomart.com  Fax: 1-631-938-8127

 45-1 Ramsey Road, Shirley, NY 11967, USA

Storage

The shelf life is related to many factors, storage state, buffer ingredients, storage temperature and the stability of the protein itself. Generally, the shelf life of liquid form is 6 months at -20 centigrade/-80 centigrade. The shelf life of lyophilized form is 12 months at -20 centigrade/-80 centigrade.

Concentration

A hardcopy of COA will be sent along with the products. Please refer to it for detailed information.

GENE INFORMATION**Gene Name**

cfp21 cutinase [*Mycobacterium tuberculosis* H37Rv]

Official Symbol

CFP21

Synonyms

Rv1984c; clp1; culp1;

Gene ID

885813

Protein Refseq

NP_216500

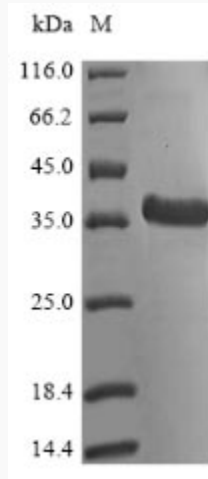
UniProt ID

P9WP43

 Tel: 1-631-559-9269 1-516-512-3133

 Email: info@creative-biomart.com  Fax: 1-631-938-8127

 45-1 Ramsey Road, Shirley, NY 11967, USA



(Tris-Glycine gel) Discontinuous SDS-PAGE (reduced) with 5% enrichment gel and 15% separation gel.

 Tel: 1-631-559-9269 1-516-512-3133

 Email: info@creative-biomart.com  Fax: 1-631-938-8127

 45-1 Ramsey Road, Shirley, NY 11967, USA