

## Active Recombinant Human FSH alpha/beta Protein

**Cat. No.** CGA-01H    **Lot. No.** (See product label)

### SPECIFICATION

<b>Product Overview</b>	Recombinant Human FSH alpha (Ala25-Ser116, Accession # P01215) and Human FSH beta (Cys21-Glu129, Accession # P01225) without tag was expressed in Chinese Hamster Ovary cell line.
<b>Species</b>	Human
<b>Source</b>	CHO
<b>ProteinLength</b>	Ala25-Ser116, Cys21-Glu129
<b>Description</b>	The four human glycoprotein hormones chorionic gonadotropin (CG), luteinizing hormone (LH), follicle stimulating hormone (FSH), and thyroid stimulating hormone (TSH) are dimers consisting of alpha and beta subunits that are associated noncovalently. The alpha subunits of these hormones are identical, however, their beta chains are unique and confer biological specificity. The protein encoded by this gene is the alpha subunit and belongs to the glycoprotein hormones alpha chain family. Two transcript variants encoding different isoforms have been found for this gene.
<b>Form</b>	Noncovalently-linked heterodimer
<b>Bio-activity</b>	Measured by its ability to induce cAMP accumulation in HEK293 human embryonic kidney cells transfected with human FSH R. The ED50 for this effect is 25-200 pg/mL.
<b>Molecular Mass</b>	Predicted Molecular Mass: 10.2 kDa (FSH alpha ) & 12.4 kDa (FSH beta )

 Tel: 1-631-559-9269    1-516-512-3133

 Email: [info@creative-biomart.com](mailto:info@creative-biomart.com)     Fax: 1-631-938-8127

 45-1 Ramsey Road, Shirley, NY 11967, USA

	SDS-PAGE: 22-26 kDa, reducing conditions
<b>N-terminal Sequence Analysis</b>	Ala25 (FSH alpha ) & Cys21 (FSH beta )
<b>Endotoxin</b>	< 0.10 EU/μg of the protein by the LAL method.
<b>Purity</b>	>95%, by SDS-PAGE visualized with Silver Staining and quantitative densitometry by Coomassie® Blue Staining.
<b>Storage</b>	Use a manual defrost freezer and avoid repeated freeze-thaw cycles. 12 months from date of receipt, -20 to -70 centigrade as supplied. 1 month, 2 to 8 centigrade under sterile conditions after reconstitution. 3 months, -20 to -70 centigrade under sterile conditions after reconstitution.
<b>Storage Buffer</b>	Lyophilized from a 0.2 μm filtered solution in PBS with BSA as a carrier protein.
<b>Reconstitution</b>	Reconstitute at 100 μg/mL in PBS containing at least 0.1% human or bovine serum albumin.
<b>Shipping</b>	The product is shipped at ambient temperature.

## GENE INFORMATION

<b>Gene Name</b>	CGA glycoprotein hormones, alpha polypeptide [ Homo sapiens (human) ]
<b>Official Symbol</b>	CGA
<b>Synonyms</b>	CGA; glycoprotein hormones, alpha polypeptide; HCG; LHA; FSHA; GPA1; GPHA; TSHA; GPHA1; CG-ALPHA; glycoprotein hormones alpha chain; FSH-alpha; LSH-alpha; TSH-alpha; anterior pituitary glycoprotein hormones common subunit alpha;

 Tel: 1-631-559-9269 1-516-512-3133

 Email: [info@creative-biomart.com](mailto:info@creative-biomart.com)  Fax: 1-631-938-8127

 45-1 Ramsey Road, Shirley, NY 11967, USA

choriogonadotropin alpha chain; chorionic gonadotrophin subunit alpha; chorionic gonadotropin, alpha polypeptide; follicle-stimulating hormone alpha chain; follicle-stimulating hormone alpha subunit; follitropin alpha chain; luteinizing hormone alpha chain; lutropin alpha chain; thyroid-stimulating hormone alpha chain; thyrotropin alpha chain

**Gene ID** 1081

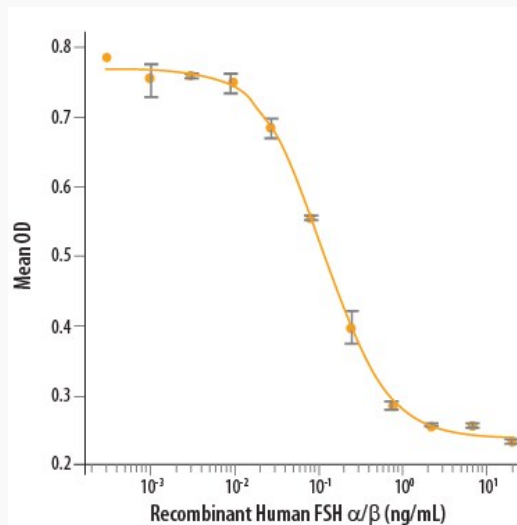
**mRNA Refseq** [NM\\_000735](#)

**Protein Refseq** [NP\\_000726](#)

**MIM** 118850

**UniProt ID** [P01215](#)

**Bioactivity**

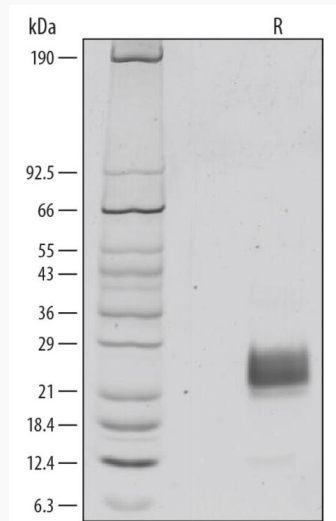


 Tel: 1-631-559-9269 1-516-512-3133

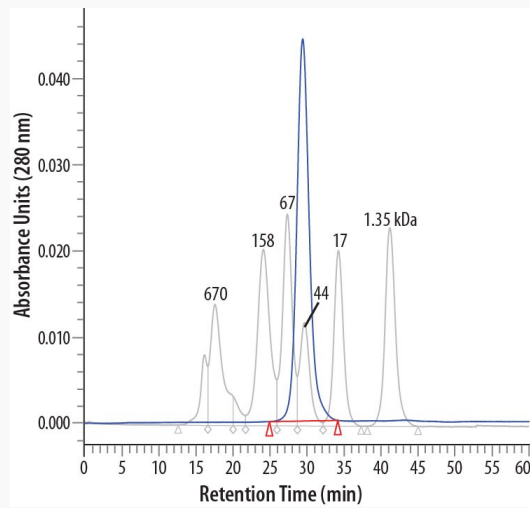
 Email: [info@creative-biomart.com](mailto:info@creative-biomart.com)  Fax: 1-631-938-8127


 45-1 Ramsey Road, Shirley, NY 11967, USA

**SDS-PAGE**



**Gel Filtration  
Chromatography**



 Tel: 1-631-559-9269 1-516-512-3133

 Email: [info@creative-biomart.com](mailto:info@creative-biomart.com)  Fax: 1-631-938-8127

 45-1 Ramsey Road, Shirley, NY 11967, USA