

## Recombinant Dog CGA protein, His&Myc-tagged

Cat. No. CGA-1364D Lot. No. (See product label)

### SPECIFICATION

<b>Product Overview</b>	Recombinant Dog CGA protein(Q9XSW8)(25-120aa), fused to N-terminal His tag and C-terminal Myc tag, was expressed in E. coli.
<b>Species</b>	Dog
<b>Source</b>	E.coli
<b>ProteinLength</b>	25-120aa
<b>Form</b>	If the delivery form is liquid, the default storage buffer is Tris/PBS-based buffer, 5%-50% glycerol. If the delivery form is lyophilized powder, the buffer before lyophilization is Tris/PBS-based buffer, 6% Trehalose, pH 8.0.
<b>Molecular Mass</b>	18.1 kDa
<b>Purity</b>	Greater than 90% as determined by SDS-PAGE.
<b>Storage</b>	Store at -20°C/-80°C upon receipt, aliquoting is necessary for mutiple use. Avoid repeated freeze-thaw cycles.
<b>Reconstitution</b>	It is recommended that sterile water be added to the vial to prepare a stock solution of 0.2 ug/ul. Centrifuge the vial at 4°C before opening to recover the entire contents.

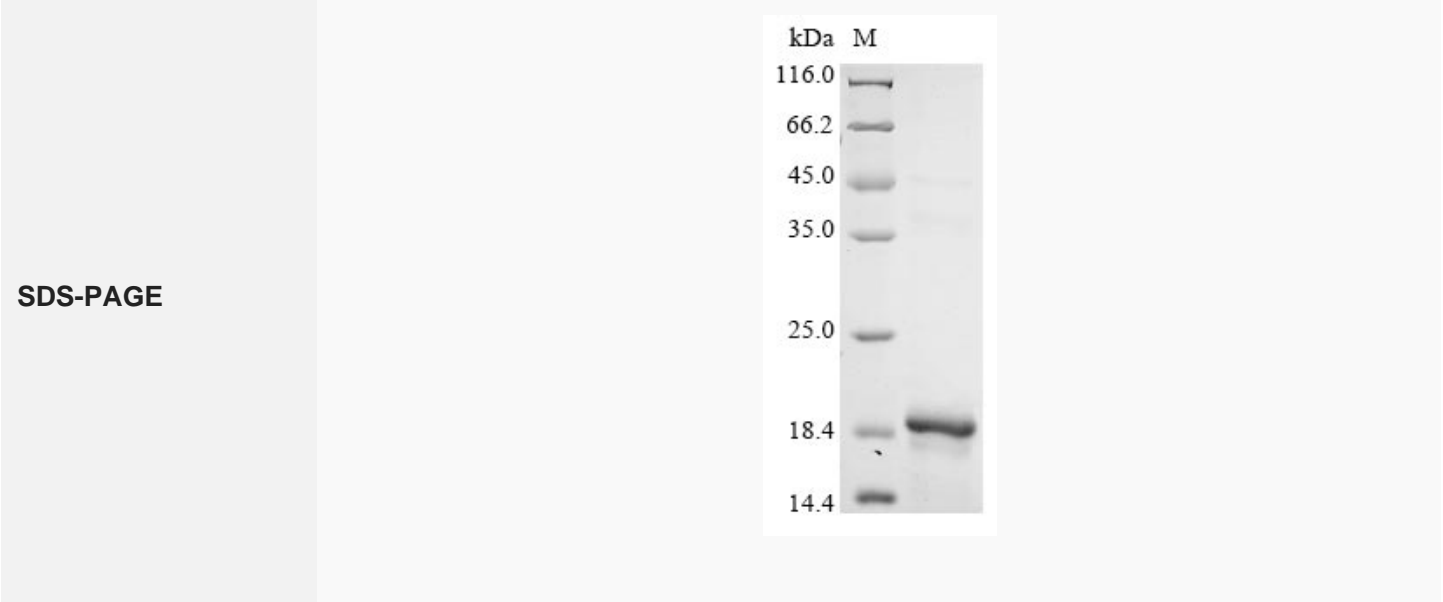
### GENE INFORMATION

 Tel: 1-631-559-9269 1-516-512-3133

 Email: [info@creative-biomart.com](mailto:info@creative-biomart.com)  Fax: 1-631-938-8127

 45-1 Ramsey Road, Shirley, NY 11967, USA

<b>Gene Name</b>	CGA glycoprotein hormones, alpha polypeptide [ <i>Canis lupus familiaris</i> ]
<b>Official Symbol</b>	CGA
<b>Synonyms</b>	CGA; glycoprotein hormones, alpha polypeptide; glycoprotein hormones alpha chain; FSH-alpha; LSH-alpha; TSH alpha; TSH-alpha; lutropin alpha chain; follitropin alpha chain; thyrotropin alpha chain; thyrotropin alpha subunit; luteinizing hormone alpha chain; thyroid-stimulating hormone alpha chain; follicle-stimulating hormone alpha chain; anterior pituitary glycoprotein hormones common subunit alpha;
<b>Gene ID</b>	403483
<b>mRNA Refseq</b>	NM_001002988
<b>Protein Refseq</b>	NP_001002988



Tel: 1-631-559-9269 1-516-512-3133

Email: [info@creative-biomart.com](mailto:info@creative-biomart.com) Fax: 1-631-938-8127

45-1 Ramsey Road, Shirley, NY 11967, USA