

Recombinant Human CGA protein, mFc-tagged

Cat. No. CGA-285H Lot. No. (See product label)

SPECIFICATION

Product Overview	Recombinant Human CGA protein(NP_000726.1) (Met1-Ser116) was expressed in HEK293 with the Fc region of mouse IgG1 at the C-terminus.
Species	Human
Source	HEK293
ProteinLength	1-116 aa
Form	Lyophilized from sterile PBS, pH 7.4.
Molecular Mass	The recombinant human CGA/mFc comprises 326 amino acids and has a predicted molecular mass of 36.6 kDa. The apparent molecular mass of the protein is approximately 45.8 kDa in SDS-PAGE under reducing conditions.
Endotoxin	< 1.0 EU per µg of the protein as determined by the LAL method.
Purity	> 90 % as determined by SDS-PAGE
Storage	Store it under sterile conditions at -20°C to -80°C upon receiving. Recommend to aliquot the protein into smaller quantities for optimal storage. Avoid repeated freeze-thaw cycles.
Reconstitution	It is recommended that sterile water be added to the vial to prepare a stock solution of 0.2 ug/ul. Centrifuge the vial at 4°C before opening to recover the entire contents.

 Tel: 1-631-559-9269 1-516-512-3133

 Email: info@creative-biomart.com  Fax: 1-631-938-8127

 45-1 Ramsey Road, Shirley, NY 11967, USA

protein Refseq-Weblink http://www.ncbi.nlm.nih.gov/protein/NP_000726.1

Unit ID P01215

Unit ID-Weblink <http://www.uniprot.org/uniprot/P01215>

GENE INFORMATION

Gene Name CGA glycoprotein hormones, alpha polypeptide [Homo sapiens]

Official Symbol CGA

Synonyms

CGA; glycoprotein hormones, alpha polypeptide; glycoprotein hormones alpha chain; chorionic gonadotropin; alpha polypeptide; follicle stimulating hormone alpha subunit; FSHA; GPHA; GPHA1; HCG; LHA; luproteinizing hormone alpha chain; lutropin alpha chain; thyroid stimulating hormone alpha chain; TSHA; FSH-alpha; LSH-alpha; TSH-alpha; follitropin alpha chain; thyrotropin alpha chain; choriogonadotropin alpha chain; chorionic gonadotrophin subunit alpha; thyroid-stimulating hormone alpha chain; follicle-stimulating hormone alpha chain; chorionic gonadotropin, alpha polypeptide; follicle-stimulating hormone alpha subunit; anterior pituitary glycoprotein hormones common subunit alpha; CG-ALPHA;

Gene ID 1081

mRNA Refseq [NM_000735](#)

protein Refseq NP_000726

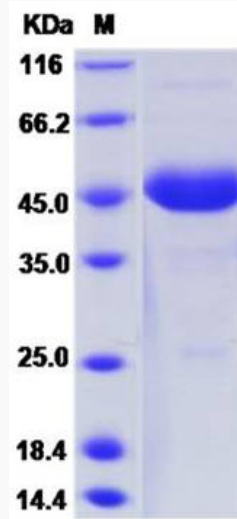
MIM 118850

 Tel: 1-631-559-9269 1-516-512-3133

 Email: info@creative-biomart.com  Fax: 1-631-938-8127

 45-1 Ramsey Road, Shirley, NY 11967, USA

SDS-PAGE



 Tel: 1-631-559-9269 1-516-512-3133

 Email: info@creative-biomart.com  Fax: 1-631-938-8127

 45-1 Ramsey Road, Shirley, NY 11967, USA