

Native Human Chorionic Gonadotropin, Beta Polypeptide

Cat. No. CGB-1850H **Lot. No.** (See product label)

SPECIFICATION

Product Overview	Native human CGB was expressed in Human Urine. Native Human Chorionic Gonadotropin, beta subunit.
Species	Human
Source	Human Urine
Description	CGB is a glycoprotein hormone produced during pregnancy that is made by the developing embryo after conception and later by the syncytiotrophoblast (part of the placenta). Some tumors make this hormone, measured elevated levels when the patient is not pregnant can lead to a cancer diagnosis. However, it is not known whether this production is a contributing cause or an effect of tumorigenesis. The pituitary analog of CGB, known as luteinizing hormone (LH), is produced in the pituitary gland of males and females of all ages.
Form	Lyophilized powder
Formulation	Lyophilized from 50mM Ammonium Bicarbonate.
Reconstitution	Reconstitute using neutral pH buffer of choice. Avoid extreme high and low pH.
Molecular Weight	Approximately 22 kDa
Purity	≥98% by SDS-PAGE

 Tel: 1-631-559-9269 1-516-512-3133

 Email: info@creative-biomart.com  Fax: 1-631-938-8127

 45-1 Ramsey Road, Shirley, NY 11967, USA

Grade	High Purity
Activity	1mg/mg by Absorbance at 280 nm
Certification	The material tested negative for anti-HIV-1/2, anti-HCV and HBsAg by FDA approved methods.
Storage	-2°C to -8°C for short term storage, -20°C for long term storage after reconstitution. Product is stable for five years from date of delivery. Avoid freeze/thaw cycles.
Pathways	Glycoprotein hormones; Metabolism; Metabolism of amino acids and derivatives; Peptide hormone biosynthesis

GENE INFORMATION

Gene Name	CGB chorionic gonadotropin, beta polypeptide [Homo sapiens]
Official Symbol	CGB
Synonyms	CGB; chorionic gonadotropin, beta polypeptide; CGB3; CGB5; CGB7; CGB8; hCGB; choriogonadotropin subunit beta; CG-beta; chorionic gonadotropin beta chain; chorionic gonadotropin chain beta; chorionic gonadotropin beta subunit; chorionic gonadotropin beta 3 subunit; Choriogonadotropin subunit beta
Gene ID	1082
mRNA Refseq	NM_000737
Protein Refseq	NP_000728
MIM	118860

 Tel: 1-631-559-9269 1-516-512-3133

 Email: info@creative-biomart.com  Fax: 1-631-938-8127

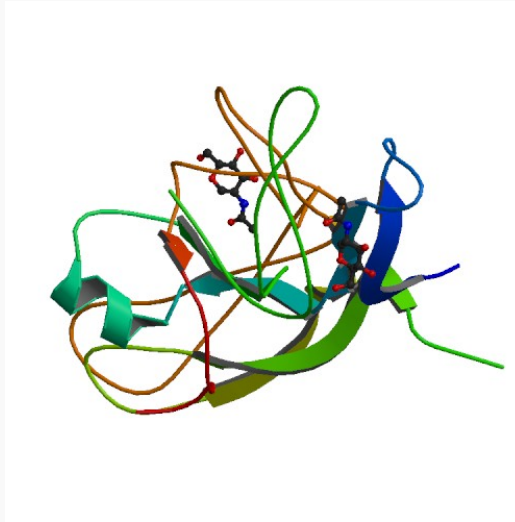
 45-1 Ramsey Road, Shirley, NY 11967, USA

UniProt ID	P01233
-------------------	--------

Chromosome Location	19q13.3
----------------------------	---------

Function	hormoneactivity
-----------------	-----------------

PDBrendering based on 1hcn.



 Tel: 1-631-559-9269 1-516-512-3133

 Email: info@creative-biomart.com  Fax: 1-631-938-8127

 45-1 Ramsey Road, Shirley, NY 11967, USA