

Native Human Chorionic Gonadotropin, Beta Polypeptide

Cat. No. CGB-1856H **Lot. No.** (See product label)

SPECIFICATION

Product Overview	Native human CGB was expressed in Human Pregnancy Urine.
Species	Human
Source	Human Pregnancy Urine
Description	CGB is a high quality product that easily dissolves to clarity in a sodium chloride solution. This product complies with USP31/EP6 specifications and is calibrated against the WHO IS (75/537). CGB is a peptide hormone produced in pregnancy, that is made by the embryo soon after conception and later by the trophoblast (part of the placenta). Levels of CGB may be measured in the blood or urine. Most commonly, this is done as a pregnancy test, intended to indicate the presence or absence of an implanted embryo.
Form	Lyophilized from NaCl Buffer.
Biological Activity	>6000 u/mg
Molecular Weight	36.7 kDa
Purity	USP Grade
Endotoxin Level	< 0.1 ng/μg of protein.
Storage	Store at 2-4°C. Stable for 3 years. Avoid repeated freeze-thaw cycles.

 Tel: 1-631-559-9269 1-516-512-3133

 Email: info@creative-biomart.com  Fax: 1-631-938-8127

 45-1 Ramsey Road, Shirley, NY 11967, USA

Pathways Glycoproteinhormones; Metabolism; Metabolism of amino acids and derivatives; Peptidehormone biosynthesis

GENE INFORMATION

Gene Name CGB chorionic gonadotropin, betapolypeptide [Homo sapiens]

Official Symbol CGB

Synonyms CGB; chorionic gonadotropin, beta polypeptide; CGB3; CGB5; CGB7;CGB8; hCGB; choriogonadotropin subunit beta; CG-beta; chorionic gonadotropin beta chain; chorionicgonadotrophin chain beta; chorionic gonadotropin beta subunit; chorionicgonadotropin beta 3 subunit; Choriogonadotropin subunit beta

Gene ID 1082

mRNA Refseq NM_000737

Protein Refseq NP_000728

MIM 118860

UniProt ID P01233

Chromosome Location 19q13.3

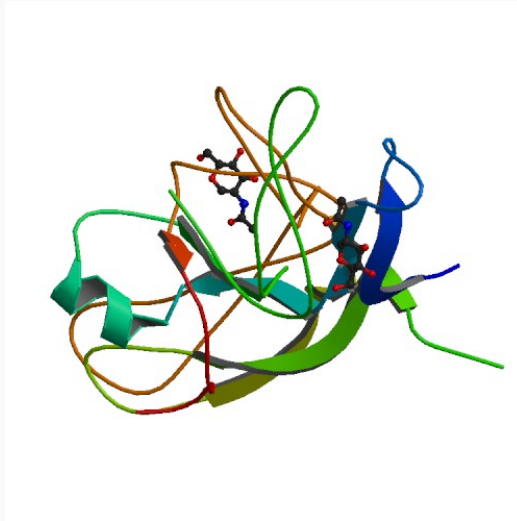
Function hormoneactivity

 Tel: 1-631-559-9269 1-516-512-3133

 Email: info@creative-biomart.com  Fax: 1-631-938-8127

 45-1 Ramsey Road, Shirley, NY 11967, USA

PDBrendering based
on 1hcn.



 Tel: 1-631-559-9269 1-516-512-3133

 Email: info@creative-biomart.com  Fax: 1-631-938-8127

 45-1 Ramsey Road, Shirley, NY 11967, USA