

Recombinant Human CGB3 protein, His-tagged

Cat. No. CGB3-130H Lot. No. (See product label)

SPECIFICATION

Product Overview	Recombinant Human CGB3(21-165aa) fused with His tag at C-terminal was expressed in Insect cells.
Species	Human
Source	Insect Cells
ProteinLength	21-165 a.a.
Description	CGB3, also known as choriogonadotropin subunit beta, is a member of the glycoprotein hormone beta chain family and encodes the beta 3 subunit of chorionic gonadotropin (CG). It stimulates the expression of GCM1 target genes, including the fusogenic protein syncytin-1, to promote placental cell fusion. It synthesized in large quantities by the developing placenta, reaching peak concentrations in maternal blood during the late first trimester and early midtrimester of pregnancy. It is expressed exclusively by trophoblasts. It is an important biomarker in pregnancy and oncology, where it is routinely detected and quantified by specific immunoassays.
Form	Liquid. In Phosphate Buffered Saline (pH 7.4) containing 10% glycerol.
Molecular Mass	16.6kDa (154aa) 18-28kDa (SDS-PAGE under reducing conditions)
AA Sequence	ADPSKEPLRP RCRPINATLA VEKEGCPVCI TVNTTICAGY CPTMTRVLQG VLPALPQVVC NYRDVRFESI RLPGCPRGVN PVVSYAVALS

 Tel: 1-631-559-9269 1-516-512-3133

 Email: info@creative-biomart.com  Fax: 1-631-938-8127

 45-1 Ramsey Road, Shirley, NY 11967, USA

CQCALCRRST TDCGGPKDHP LTCDDPRFQD SSSSKAPPPS LPSPSRLPGP
SDTPILPQHH HHHH

Endotoxin < 1.0 EU per 1 microgram of protein (determined by LAL method)

Purity > 90% by SDS - PAGE

Applications SDS-PAGE

Storage Can be stored at +4 centigrade short term (1-2 weeks). For long term storage, aliquot and store at -20 centigrade or -70 centigrade. Avoid repeated freezing and thawing cycles.

Concentration 0.25mg/ml (determined by Absorbance at 280nm)

GENE INFORMATION

Gene Name [CGB3 chorionic gonadotropin beta subunit 3 \[Homo sapiens \]](#)

Official Symbol [CGB3](#)

Synonyms CGB; CGB5; CGB7; CGB8; hCGB; CG-beta; chorionic gonadotrophin chain beta; chorionic gonadotropin beta 3 subunit; chorionic gonadotropin beta chain; chorionic gonadotropin chain beta; chorionic gonadotropin, beta polypeptide

Gene ID [1082](#)

mRNA Refseq [NM_000737](#)

Protein Refseq [NP_000728](#)

 Tel: 1-631-559-9269 1-516-512-3133

 Email: info@creative-biomart.com  Fax: 1-631-938-8127

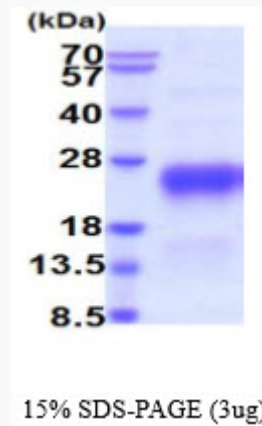
 45-1 Ramsey Road, Shirley, NY 11967, USA

MIM 118860

UniProt ID P0DN86

Chromosome Location 19q13.33

Pathway Gene Expression, organism-specific biosystem; Glycoprotein hormones, organism-specific biosystem; TFAP2 (AP-2) family regulates transcription of growth factors and their receptors, organism-specific biosystem



 Tel: 1-631-559-9269 1-516-512-3133

 Email: info@creative-biomart.com  Fax: 1-631-938-8127

 45-1 Ramsey Road, Shirley, NY 11967, USA