

Recombinant Human CGGBP1 Protein, GST-Tagged

Cat. No. CGGBP1-1191H Lot. No. (See product label)

SPECIFICATION

Product Overview	Human CGGBP1 full-length ORF (NP_001008391.1, 1 a.a. - 167 a.a.) recombinant protein with GST-tag at N-terminal.
Species	Human
Source	Wheat Germ
Description	CGGBP1 influences expression of the FMR1 gene (MIM 309550), which is associated with the fragile X mental retardation syndrome (MIM 300624), by specifically interacting with the 5-prime (CGG) _n -3-prime repeat in its 5-prime UTR.[supplied by OMIM, Mar 2008]
Molecular Mass	45.2 kDa
AA Sequence	MERFVVTAPPARNRSKTALYVTPLDRVTEFGGELHEDGGKLFCTSCNVVLNHVRKS AISDHLKSKTHTKRKAEFEEQNVRKKQRPLTASLQCNSTAQTEKVSVIQDFVKMCLE ANIPLEKADHPAVRAFLSRHVKNNGGSIPKSDQLRRAYLPDGYENENQLLNSQDC
Applications	Enzyme-linked Immunoabsorbent Assay Western Blot (Recombinant protein) Antibody Production Protein Array
Storage	Store at -80 centigrade. Aliquot to avoid repeated freezing and thawing.

 Tel: 1-631-559-9269 1-516-512-3133

 Email: info@creative-biomart.com  Fax: 1-631-938-8127

 45-1 Ramsey Road, Shirley, NY 11967, USA

Storage Buffer 50 mM Tris-HCl, 10 mM reduced Glutathione, pH=8.0 in the elution buffer.

GENE INFORMATION

Gene Name CGGBP1 CGG triplet repeat binding protein 1 [Homo sapiens]

Official Symbol CGGBP1

Synonyms CGGBP1; CGG triplet repeat binding protein 1; CGG triplet repeat-binding protein 1; CGGBP; p20 CGG binding protein; p20 CGGBP; CGG-binding protein 1; p20-CGG binding protein; 20 kDa CGG-binding protein; p20-CGGBP DNA-binding protein; p20-CGGBP;

Gene ID 8545

mRNA Refseq NM_001008390

Protein Refseq NP_001008391

MIM 603363

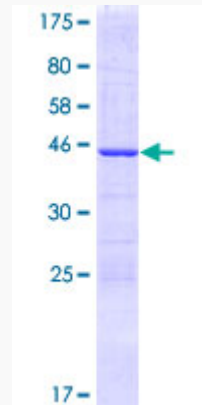
UniProt ID Q9UFW8

 Tel: 1-631-559-9269 1-516-512-3133

 Email: info@creative-biomart.com  Fax: 1-631-938-8127

 45-1 Ramsey Road, Shirley, NY 11967, USA

**Quality Control
Testing**



12.5% SDS-PAGE Stained with Coomassie Blue.

 Tel: 1-631-559-9269 1-516-512-3133

 Email: info@creative-biomart.com  Fax: 1-631-938-8127

 45-1 Ramsey Road, Shirley, NY 11967, USA