

Recombinant Human CGGBP1 Protein, Myc/DDK-tagged, C13 and N15-labeled

Cat. No. CGGBP1-4614H **Lot. No.** (See product label)

SPECIFICATION

Product Overview	CGGBP1 MS Standard C13 and N15-labeled recombinant protein (NP_001008391) with a C-terminal MYC/DDK tag, was expressed in HEK293 cells.
Species	Human
Source	HEK293
Description	This gene encodes a CGG repeat-binding protein that primarily localizes to the nucleus. CGG trinucleotide repeats are implicated in many disorders as they often act as transcription- and translation-regulatory elements, can produce hairpin structures which cause DNA replication errors, and form regions prone to chromosomal breakage. CGG repeats are also targets for CpG methylation. In addition to its ability to bind CGG repeats and regulate transcription, this gene is believed to play a role in DNA damage repair and telomere protection. In vitro studies indicate this protein does not bind to methylated CpG sequences.
Molecular Mass	18.8 kDa
AA Sequence	MERFVVTAPPARNRSKTALYVTPLDRVTEFGGELHEDGGKLFCTSCNVVLNHVRKS AIDHLKSKTHTKRKAEFEEQNVRKKQRPLTASLQCNSTAQTEKVSVIQDFVKMCLE ANIPLEKADHPAVRAFLSRHVKNNGGSIPKSDQLRRAYLPDGYENENQLLNSQDCTRT RPLEQKLISEEDLAANDILDYKDDDDKV
Purity	> 80% as determined by SDS-PAGE and Coomassie blue staining

 Tel: 1-631-559-9269 1-516-512-3133

 Email: info@creative-biomart.com  Fax: 1-631-938-8127

 45-1 Ramsey Road, Shirley, NY 11967, USA

Stability	Stable for 3 months from receipt of products under proper storage and handling conditions.
Storage	Store at -80 centigrade. Avoid repeated freeze-thaw cycles.
Concentration	50 µg/mL as determined by BCA
Storage Buffer	100 mM glycine, 25 mM Tris-HCl, pH 7.3.

GENE INFORMATION

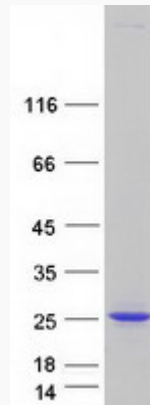
Gene Name	CGGBP1 CGG triplet repeat binding protein 1 [Homo sapiens (human)]
Official Symbol	CGGBP1
Synonyms	CGGBP1; CGG triplet repeat binding protein 1; CGG triplet repeat-binding protein 1; CGGBP; p20 CGG binding protein; p20 CGGBP; CGG-binding protein 1; p20-CGG binding protein; 20 kDa CGG-binding protein; p20-CGGBP DNA-binding protein; p20-CGGBP;
Gene ID	8545
mRNA Refseq	NM_001008390
Protein Refseq	NP_001008391
MIM	603363
UniProt ID	Q9UFW8

 Tel: 1-631-559-9269 1-516-512-3133

 Email: info@creative-biomart.com  Fax: 1-631-938-8127

 45-1 Ramsey Road, Shirley, NY 11967, USA

SDS-PAGE



 Tel: 1-631-559-9269 1-516-512-3133

 Email: info@creative-biomart.com  Fax: 1-631-938-8127

 45-1 Ramsey Road, Shirley, NY 11967, USA