

Recombinant Human CGREF1 Protein (Ala20-Ile301), C-His tagged

Cat. No. CGREF1-1008H Lot. No. (See product label)

SPECIFICATION

Product Overview	Recombinant human CGREF1 (Ala20-Ile301) fused with the C-terminal His tag was expressed in Mammalian cells.
Species	Human
Source	Mammalian Cells
ProteinLength	Ala20-Ile301
Form	Lyophilized powder/frozen liquid
Molecular Mass	31.02 kDa
Purity	>90% as determined by SDS-PAGE.
Notes	For research use only.
Storage	Use a manual defrost freezer and avoid repeated freeze thaw cycles. Store at 2 to 8 centigrade for one week. Store at -20 to -80 centigrade for twelve months from the date of receipt.
Storage Buffer	Supplied as solution form in PBS or lyophilized from PBS.
Reconstitution	Reconstitute in sterile water for a stock solution.

 Tel: 1-631-559-9269 1-516-512-3133

 Email: info@creative-biomart.com  Fax: 1-631-938-8127

 45-1 Ramsey Road, Shirley, NY 11967, USA

Shipping They are shipped out with dry ice/blue ice unless customers require otherwise.

GENE INFORMATION

Gene Name [CGREF1 cell growth regulator with EF-hand domain 1 \[Homo sapiens \(human\) \]](#)

Official Symbol [CGREF1](#)

Synonyms CGREF1; cell growth regulator with EF-hand domain 1; cell growth regulator with EF hand domain protein 1; CGR11; hydrophobestin; cell growth regulatory gene 11 protein; cell growth regulator with EF hand domain 1;

Gene ID [10669](#)

mRNA Refseq [NM_001166239](#)

Protein Refseq [NP_001159711](#)

MIM [606137](#)

UniProt ID [Q99674](#)

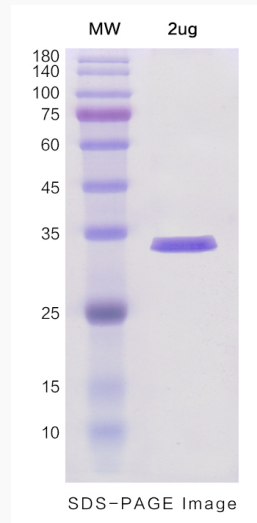
 Tel: 1-631-559-9269 1-516-512-3133

 Email: info@creative-biomart.com  Fax: 1-631-938-8127

 45-1 Ramsey Road, Shirley, NY 11967, USA



SDS-PAGE



Tel: 1-631-559-9269 1-516-512-3133

Email: info@creative-biomart.com Fax: 1-631-938-8127

45-1 Ramsey Road, Shirley, NY 11967, USA