

Recombinant Human CGREF1 Protein, GST-Tagged

Cat. No. CGREF1-1193H **Lot. No.** (See product label)

SPECIFICATION

Product Overview	Human CGREF1 partial ORF (AAH34764, 136 a.a. - 235 a.a.) recombinant protein with GST-tag at N-terminal.
Species	Human
Source	Wheat Germ
Description	CGREF1 (Cell Growth Regulator With EF-Hand Domain 1) is a Protein Coding gene. GO annotations related to this gene include calcium ion binding.
Molecular Mass	36.63 kDa
AA Sequence	PAELINFPGVALRHVEPGEPLAPSPQEPQAVGRQSLAKSPLRQETQEAPGPREEA KGQVEARRESLDPVQEPGGQAEADGDVPGPRGEAEGQAEAKGDA
Applications	Enzyme-linked Immunoabsorbent Assay Western Blot (Recombinant protein) Antibody Production Protein Array
Storage	Store at -80 centigrade. Aliquot to avoid repeated freezing and thawing.
Storage Buffer	50 mM Tris-HCl, 10 mM reduced Glutathione, pH=8.0 in the elution buffer.

GENE INFORMATION

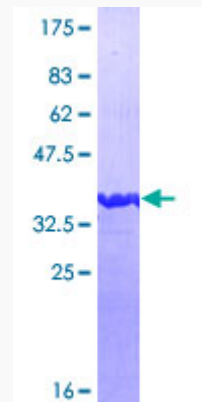
 Tel: 1-631-559-9269 1-516-512-3133

 Email: info@creative-biomart.com  Fax: 1-631-938-8127

 45-1 Ramsey Road, Shirley, NY 11967, USA

Gene Name	CGREF1 cell growth regulator with EF-hand domain 1 [Homo sapiens]
Official Symbol	CGREF1
Synonyms	CGREF1; cell growth regulator with EF-hand domain 1; cell growth regulator with EF hand domain protein 1; CGR11; hydrophobestin; cell growth regulatory gene 11 protein; cell growth regulator with EF hand domain 1;
Gene ID	10669
mRNA Refseq	NM_001166239
Protein Refseq	NP_001159711
MIM	606137
UniProt ID	Q99674

Quality Control Testing



12.5% SDS-PAGE Stained with Coomassie Blue.

 Tel: 1-631-559-9269 1-516-512-3133

 Email: info@creative-biomart.com  Fax: 1-631-938-8127

 45-1 Ramsey Road, Shirley, NY 11967, USA