

Recombinant Human CGREF1 Protein, Myc/DDK-tagged, C13 and N15-labeled

Cat. No. CGREF1-2915H **Lot. No.** (See product label)

SPECIFICATION

Product Overview	CGREF1 MS Standard C13 and N15-labeled recombinant protein (NP_006560) with a C-terminal MYC/DDK tag, was expressed in HEK293 cells.
Species	Human
Source	HEK293
Description	Mediates cell-cell adhesion in a calcium-dependent manner. Able to inhibit growth in several cell lines.
Molecular Mass	31.9 kDa
AA Sequence	MLPLTMTVLILLLLPTGQAAPKDGVTRPDSEVQHQLLPNPFQPGQEQLGLLQSYLKG LGRTEVQLEHLSREQVLLYLFALHDYDQSGQLDGLELLSMLTAALAPGAANSPTTNP VILIVDKVLETQDLNGDGLMTPAELINFPGVALRHVEPGEPLAPSPQEPQAVGRQSLL AKSPLRQETQEAPGPREEAKGQVEARRESLDPVQEPGGQAEADGDVPGPRGEAE GQAEAKGDAPGPRGEAGGQAEAEADGAPGPRGEAGGQAEARENGEAEKELPGETL ESKNTQNDFEVHIVQVENDEITRTRPLEQKLISEEDLAANDILDYKDDDDKV
Purity	> 80% as determined by SDS-PAGE and Coomassie blue staining
Stability	Stable for 3 months from receipt of products under proper storage and handling conditions.

 Tel: 1-631-559-9269 1-516-512-3133

 Email: info@creative-biomart.com  Fax: 1-631-938-8127

 45-1 Ramsey Road, Shirley, NY 11967, USA

Storage	Store at -80 centigrade. Avoid repeated freeze-thaw cycles.
Concentration	50 µg/mL as determined by BCA
Storage Buffer	100 mM glycine, 25 mM Tris-HCl, pH 7.3.
GENE INFORMATION	
Gene Name	CGREF1 cell growth regulator with EF-hand domain 1 [Homo sapiens (human)]
Official Symbol	CGREF1
Synonyms	CGREF1; cell growth regulator with EF-hand domain 1; cell growth regulator with EF hand domain protein 1; CGR11; hydrophobestin; cell growth regulatory gene 11 protein; cell growth regulator with EF hand domain 1;
Gene ID	10669
mRNA Refseq	NM_006569
Protein Refseq	NP_006560
MIM	606137
UniProt ID	Q99674

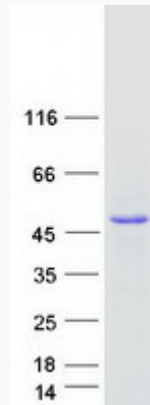
 Tel: 1-631-559-9269 1-516-512-3133

 Email: info@creative-biomart.com  Fax: 1-631-938-8127

 45-1 Ramsey Road, Shirley, NY 11967, USA



SDS-PAGE



Tel: 1-631-559-9269 1-516-512-3133

Email: info@creative-biomart.com Fax: 1-631-938-8127

45-1 Ramsey Road, Shirley, NY 11967, USA