

Recombinant Human CHAC1 Protein, GST-Tagged

Cat. No. CHAC1-1199H **Lot. No.** (See product label)

SPECIFICATION

Product Overview	Human CHAC1 full-length ORF (NP_077016.1, 1 a.a. - 222 a.a.) recombinant protein with GST tag at N-terminal.
Species	Human
Source	Wheat Germ
Description	This gene encodes a member of the gamma-glutamylcyclotransferase family of proteins. The encoded protein has been shown to promote neuronal differentiation by deglycosylation of the Notch receptor, which prevents receptor maturation and inhibits Notch signaling. This protein may also play a role in the unfolded protein response, and in regulation of glutathione levels and oxidative balance in the cell. Elevated expression of this gene may indicate increased risk of cancer recurrence among breast and ovarian cancer patients. [provided by RefSeq, Sep 2016]
Molecular Mass	50.8 kDa
AA Sequence	MKQESAAPNTPPTSQSPTPSAQFPRNDGDPQALWIFGYGSLVWRPDFAYSDSRVG FVRGYSRRFWQGDTFHRGSDKMPGRVVTLLEDHEGCTWGVAYQVQGEQVSKALK YLNVREAVLGGYDTKEVTFYPQDAPDQPLKALAYVATPQNPGYLGPAPEEAIATQIL ACRGFSGHNLEYLLRLADFMQLCGPQAQDEHLAAIVDAVGTMLPCFCPTEQALALV
Applications	Enzyme-linked Immunoabsorbent Assay Western Blot (Recombinant protein) Antibody Production

 Tel: 1-631-559-9269 1-516-512-3133

 Email: info@creative-biomart.com  Fax: 1-631-938-8127

 45-1 Ramsey Road, Shirley, NY 11967, USA

Protein Array

Storage Store at -80 centigrade. Aliquot to avoid repeated freezing and thawing.

Storage Buffer 50 mM Tris-HCl, 10 mM reduced Glutathione, pH=8.0 in the elution buffer.

GENE INFORMATION

Gene Name CHAC1 ChaC glutathione specific gamma-glutamylcyclotransferase 1 [Homo sapiens (human)]

Official Symbol CHAC1

Synonyms CHAC1; ChaC glutathione specific gamma-glutamylcyclotransferase 1; ChaC Glutathione Specific Gamma-Glutamylcyclotransferase 1; Gamma-GCT Acting On Glutathione Homolog 1; Blocks Notch Protein; Gamma-GCG 1; Botch; Glutathione-Specific Gamma-Glutamylcyclotransferase 1; ChaC, Cation Transport Regulator Homolog 1 (E. Coli); ChaC, Cation Transport Regulator Homolog 1; Cation Transport Regulator-Like Protein 1; ChaC, Cation Transport Regulator-Like 1; EC 2.3.2.-

Gene ID 79094

mRNA Refseq NM_024111

Protein Refseq NP_077016

MIM 614587

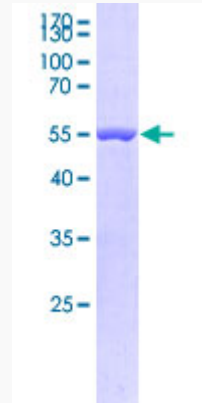
UniProt ID Q9BUX1

 Tel: 1-631-559-9269 1-516-512-3133

 Email: info@creative-biomart.com  Fax: 1-631-938-8127

 45-1 Ramsey Road, Shirley, NY 11967, USA

**Quality Control
Testing**



12.5% SDS-PAGE Stained with Coomassie Blue

 Tel: 1-631-559-9269 1-516-512-3133

 Email: info@creative-biomart.com  Fax: 1-631-938-8127

 45-1 Ramsey Road, Shirley, NY 11967, USA