

Recombinant Human CHAC2 Protein, GST-Tagged

Cat. No. CHAC2-1200H **Lot. No.** (See product label)

SPECIFICATION

| | |
|-------------------------|--|
| Product Overview | Human CHAC2 full-length ORF (NP_001008708.1, 1 a.a. - 184 a.a.) recombinant protein with GST-tag at N-terminal. |
| Species | Human |
| Source | Wheat Germ |
| Description | The protein encoded by this gene is a gamma-glutamyl cyclotransferase that catalyzes the conversion of glutathione to 5-oxoproline and cysteinylglycine. It is thought that this gene is upregulated in response to endoplasmic reticulum stress and that the glutathione depletion enhances apoptosis. [provided by RefSeq, Sep 2016] |
| Molecular Mass | 47.3 kDa |
| AA Sequence | MWVFGYGSLIWKVDFPYQDKLVGYITNYSRRFWQGSTDHRGVPKGKPRVVTLVED PAGCVWGVAYRLPVGKEEEVKAYLDFREKGGYRTTTVIFYPKDPTTKPFSVLLYIGT CDNPDYLGPALEDIAEQIFNAAGPSGRNTEYLFELANSIRNLPVEEADEHLFALEKL VKERLEGKQNLNCI |
| Applications | Enzyme-linked Immunoabsorbent Assay Western Blot (Recombinant protein) Antibody Production Protein Array |
| Storage | Store at -80 centigrade. Aliquot to avoid repeated freezing and thawing. |

 Tel: 1-631-559-9269 1-516-512-3133

 Email: info@creative-biomart.com  Fax: 1-631-938-8127

 45-1 Ramsey Road, Shirley, NY 11967, USA

Storage Buffer 50 mM Tris-HCl, 10 mM reduced Glutathione, pH=8.0 in the elution buffer.

GENE INFORMATION

Gene Name CHAC2 ChaC, cation transport regulator homolog 2 (E. coli) [Homo sapiens (human)]

Official Symbol CHAC2

Synonyms Cation transport regulator like protein 2; Cation transport regulator-like protein 2; ChaC, cation transport regulator homolog 2 (E. coli); chac2; CHAC2_HUMAN;

Gene ID 494143

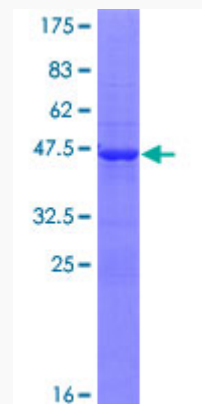
mRNA Refseq NM_001008708

Protein Refseq NP_001008708

MIM 617446

UniProt ID Q8WUX2

Quality Control Testing



Tel: 1-631-559-9269 1-516-512-3133

Email: info@creative-biomart.com Fax: 1-631-938-8127

45-1 Ramsey Road, Shirley, NY 11967, USA



12.5% SDS-PAGE Stained with Coomassie Blue.

 Tel: 1-631-559-9269 1-516-512-3133

 Email: info@creative-biomart.com  Fax: 1-631-938-8127

 45-1 Ramsey Road, Shirley, NY 11967, USA