

## Recombinant Human CHAF1A Protein, GST-Tagged

Cat. No. CHAF1A-1203H Lot. No. (See product label)

### SPECIFICATION

<b>Product Overview</b>	Human CHAF1A partial ORF (AAH67093, 21 a.a. - 120 a.a.) recombinant protein with GST-tag at N-terminal.
<b>Species</b>	Human
<b>Source</b>	Wheat Germ
<b>Description</b>	Chromatin assembly factor I (CAF1) is a nuclear complex consisting of p50, p60 (CHAF1B; MIM 601245), and p150 (CHAF1A) subunits that assembles histone octamers onto replicating DNA in vitro (Kaufman et al., 1995 [PubMed 7600578]).[supplied by OMIM, Mar 2008]
<b>Molecular Mass</b>	36.63 kDa
<b>AA Sequence</b>	CKDRPAFPVKKLIQARLPFKRLNLVPGKGADDMSDDQGTSVQSKSPDLEASLDLTLE NNCHVGSIDIDFRPKLVNGKGPLDNFLRNRIETSIGQSTVIIDL
<b>Applications</b>	Enzyme-linked Immunoabsorbent Assay Western Blot (Recombinant protein) Antibody Production Protein Array
<b>Storage</b>	Store at -80 centigrade. Aliquot to avoid repeated freezing and thawing.
<b>Storage Buffer</b>	50 mM Tris-HCl, 10 mM reduced Glutathione, pH=8.0 in the elution buffer.

 Tel: 1-631-559-9269 1-516-512-3133

 Email: [info@creative-biomart.com](mailto:info@creative-biomart.com)  Fax: 1-631-938-8127

 45-1 Ramsey Road, Shirley, NY 11967, USA

## GENE INFORMATION

**Gene Name** CHAF1A chromatin assembly factor 1, subunit A (p150) [ Homo sapiens ]

**Official Symbol** CHAF1A

**Synonyms** CHAF1A; chromatin assembly factor 1, subunit A (p150); chromatin assembly factor 1 subunit A; CAF 1; CAF1; CAF1B; CAF1P150; chromatin assembly factor I (150 kDa); MGC71229; P150; hp150; CAF-I p150; CAF-1 subunit A; CAF-I 150 kDa subunit; chromatin assembly factor I p150 subunit; CAF-1;

**Gene ID** 10036

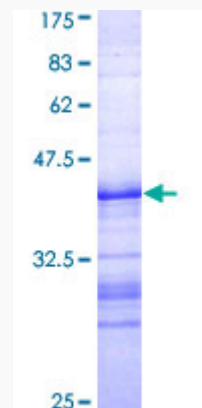
**mRNA Refseq** NM\_005483

**Protein Refseq** NP\_005474

**MIM** 601246

**UniProt ID** Q13111

**Quality Control Testing**



Tel: 1-631-559-9269 1-516-512-3133

Email: [info@creative-biomart.com](mailto:info@creative-biomart.com) Fax: 1-631-938-8127

45-1 Ramsey Road, Shirley, NY 11967, USA



12.5% SDS-PAGE Stained with Coomassie Blue.

 Tel: 1-631-559-9269 1-516-512-3133

 Email: [info@creative-biomart.com](mailto:info@creative-biomart.com)  Fax: 1-631-938-8127

 45-1 Ramsey Road, Shirley, NY 11967, USA