

Recombinant Human CHAF1B protein, Myc/DDK-tagged

Cat. No. CHAF1B-1205H Lot. No. (See product label)

SPECIFICATION

Product Overview	Recombinant Human CHAF1B protein (p60), fused to Myc/DDK-tag at C-terminus, was expressed in HEK293T.
Species	Human
Source	HEK293
Description	Chromatin assembly factor I (CAF-I) is required for the assembly of histone octamers onto newly-replicated DNA. CAF-I is composed of three protein subunits, p50, p60, and p150. The protein encoded by this gene corresponds to the p60 subunit and is required for chromatin assembly after replication. The encoded protein is differentially phosphorylated in a cell cycle-dependent manner. In addition, it is normally found in the nucleus except during mitosis, when it is released into the cytoplasm. This protein is a member of the WD-repeat HIR1 family and may also be involved in DNA repair.
Form	25 mM Tris.HCl, pH 7.3, 100 mM glycine, 10% glycerol
Molecular Mass	61.3 kDa
Purity	>80% as determined by SDS-PAGE and Coomassie blue staining.
Concentration	>50 µg/mL as determined by microplate BCA method.

GENE INFORMATION

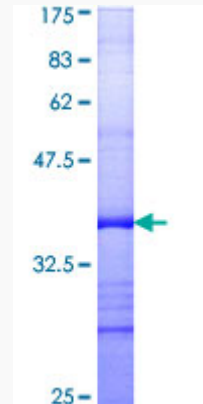
 Tel: 1-631-559-9269 1-516-512-3133

 Email: info@creative-biomart.com  Fax: 1-631-938-8127

 45-1 Ramsey Road, Shirley, NY 11967, USA

Gene Name	CHAF1B
Official Symbol	CHAF1B
Synonyms	CAF1; MPP7; CAF-1; CAF1A; CAF1P60; CAF-IP60; MPHOSPH7
Gene ID	8208
mRNA Refseq	NM_005441.3
Protein Refseq	NP_005432.1
MIM	601245
UniProt ID	Q13112

**SDS-PAGE of
CHAF1B-1205H**



 Tel: 1-631-559-9269 1-516-512-3133

 Email: info@creative-biomart.com  Fax: 1-631-938-8127

 45-1 Ramsey Road, Shirley, NY 11967, USA