

Recombinant Human CHAMP1 Protein, GST-tagged

Cat. No. CHAMP1-533H **Lot. No.** (See product label)

SPECIFICATION

Product Overview	Human C13orf8 full-length ORF (NP_115812.1, 1 a.a. - 812 a.a.) recombinant protein with GST-tag at N-terminal.
Species	Human
Source	Wheat Germ
Form	50 mM Tris-HCl, 10 mM reduced Glutathione, pH=8.0 in the elution buffer.
Molecular Mass	115.5 kDa
AA Sequence	<p>MEAFQELRKPSARLECDHCSFRGTDYENVQIHMGTIHPEFCDEMDAGGLGKMIFYQ KSAKLFHCHKCFFTSKMYSNVYYHITSKHASPKWWDKPKNQLNKETDPVKSPPLP EHQKIPCNSAEPKSIPALSMETQKLGSVLSPESPKPTPLTPLEPQKPGSVVSPELQT PLPSPEPSKPAVSSPEPPKSVPCESQKLAPVPSPEPQKPAPVSPESVKATLSNPK PQQQSHFPETLGPPSASSPESPVLAASPEPWGPPAASPESRKSARTTSPEPRKPS PSESPEPWKPFPAVSPEPRRPAPAVSPGSWKPGPPGSPRPWKSNSPSSGPWKP AKPAPSVSPGPWKPIPSVSPGPWKPTPSVSSASWKSSSVSPSSWKSPASPESWK SGPEELRKTAPTLSPEHWKAVPPVSPELRKGPPLSPEIRSPAGSPELRKPSGSPDL WKLSPDQRKTSPASLDFPESQKSSRGGSPDLWKSSFFIEPQKPVFPETRKPGPSGP SESPKAASDIWKPVLSIDTEPRKPALEPAPKAPPASPEARKRALFPEPRKHALFPE LPKSALFSESQKAVELGDELQIDAIDDQKCDILVQEELLASPKKLEDLTFPSSKLLKK DNQESSDAELSSSEYIKTDLDAMDIKGQESSSDQEQVDVESIDFSKENKMDMTSPE QSRNVLQFTEEKEAFISEEEIAKYMKRKGKGYCKICCCRAMKKGAVLHHLVNHV</p>

 Tel: 1-631-559-9269 1-516-512-3133

 Email: info@creative-biomart.com  Fax: 1-631-938-8127

 45-1 Ramsey Road, Shirley, NY 11967, USA

HSPYKCTICGKAFLLLESLLKNHVAAHGQSLKPCRCNFESNFPRGFKKHLTHCQSRH
NEEANKKLMEALEPPLEEQQI

Storage Store at -80 centigrade. Aliquot to avoid repeated freezing and thawing.

Storage Buffer 50 mM Tris-HCl, 10 mM reduced Glutathione, pH=8.0 in the elution buffer.

GENE INFORMATION

Gene Name CHAMP1 chromosome alignment maintaining phosphoprotein 1 [Homo sapiens]

Official Symbol CHAMP1

Synonyms CHAMP1; chromosome alignment maintaining phosphoprotein 1; C13orf8, chromosome 13 open reading frame 8 , zinc finger protein 828 , ZNF828; chromosome alignment-maintaining phosphoprotein 1; CAMP; CHAMP; chromosome alignment maintaining phosphoprotein; zinc finger protein 828; ZNF828; C13orf8; FLJ90413; KIAA1802;

Gene ID 283489

mRNA Refseq NM_001164144

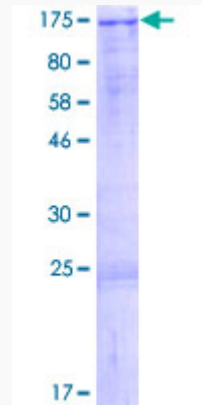
Protein Refseq NP_001157616

UniProt ID Q96JM3

 Tel: 1-631-559-9269 1-516-512-3133

 Email: info@creative-biomart.com  Fax: 1-631-938-8127

 45-1 Ramsey Road, Shirley, NY 11967, USA



Tel: 1-631-559-9269 1-516-512-3133

Email: info@creative-biomart.com Fax: 1-631-938-8127

45-1 Ramsey Road, Shirley, NY 11967, USA