

## Recombinant Human CHCHD4 Protein, GST-Tagged

Cat. No. CHCHD4-1209H Lot. No. (See product label)

### SPECIFICATION

<b>Product Overview</b>	Human CHCHD4 full-length ORF (AAH33775.1, 1 a.a. - 142 a.a.) recombinant protein with GST-tag at N-terminal.
<b>Species</b>	Human
<b>Source</b>	Wheat Germ
<b>Description</b>	CHCHD4, a component of human mitochondria, belongs to a protein family whose members share 6 highly conserved cysteine residues constituting a -CXC-CX(9)C-CX(9)C- motif in the C terminus (Hofmann et al., 2005 [PubMed 16185709]).[supplied by OMIM, Mar 2008]
<b>Molecular Mass</b>	42.4 kDa
<b>AA Sequence</b>	MSYCRQEGKDRIIFVTKEDHETPSSAELVADDPNDPYEEHGLILPNGNINWNCPLG GMASGPCGEQFKSAFSCFHYSTEEIKGSDCVDQFRAMQECCMKYKYPDLYPQEDEDE EEEREKKPAEQAEETAPEIATATKEEEGSS
<b>Applications</b>	Enzyme-linked Immunoabsorbent Assay Western Blot (Recombinant protein) Antibody Production Protein Array
<b>Storage</b>	Store at -80 centigrade. Aliquot to avoid repeated freezing and thawing.

 Tel: 1-631-559-9269 1-516-512-3133

 Email: [info@creative-biomart.com](mailto:info@creative-biomart.com)  Fax: 1-631-938-8127

 45-1 Ramsey Road, Shirley, NY 11967, USA

**Storage Buffer** 50 mM Tris-HCl, 10 mM reduced Glutathione, pH=8.0 in the elution buffer.

## GENE INFORMATION

**Gene Name** [CHCHD4 coiled-coil-helix-coiled-coil-helix domain containing 4 \[ Homo sapiens \]](#)

**Official Symbol** [CHCHD4](#)

**Synonyms**

CHCHD4; coiled-coil-helix-coiled-coil-helix domain containing 4; mitochondrial intermembrane space import and assembly protein 40; FLJ31709; MIA40; mitochondrial intermembrane space import and assembly 40 homolog (*S. cerevisiae*); TIMM40; translocase of inner mitochondrial membrane 40 homolog (*S. cerevisiae*); translocase of inner mitochondrial membrane 40 homolog; coiled-coil-helix-coiled-coil-helix domain-containing protein 4; mitochondrial intermembrane space import and assembly 40 homolog;

**Gene ID** [131474](#)

**mRNA Refseq** [NM\\_001098502](#)

**Protein Refseq** [NP\\_001091972](#)

**MIM** [611077](#)

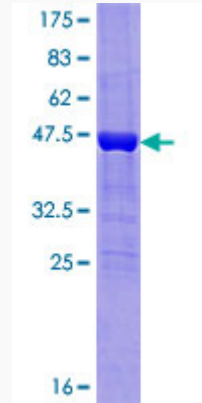
**UniProt ID** [Q8N4Q1](#)

 Tel: 1-631-559-9269 1-516-512-3133

 Email: [info@creative-biomart.com](mailto:info@creative-biomart.com)  Fax: 1-631-938-8127

 45-1 Ramsey Road, Shirley, NY 11967, USA

**Quality Control  
Testing**



12.5% SDS-PAGE Stained with Coomassie Blue.

 Tel: 1-631-559-9269 1-516-512-3133

 Email: [info@creative-biomart.com](mailto:info@creative-biomart.com)  Fax: 1-631-938-8127

 45-1 Ramsey Road, Shirley, NY 11967, USA