

## Recombinant Human CHCHD6 Protein, GST-Tagged

Cat. No. CHCHD6-1210H Lot. No. (See product label)

### SPECIFICATION

<b>Product Overview</b>	Human CHCHD6 full-length ORF (NP_115719.1, 1 a.a. - 235 a.a.) recombinant protein with GST-tag at N-terminal.
<b>Species</b>	Human
<b>Source</b>	Wheat Germ
<b>Description</b>	CHCHD6 (Coiled-Coil-Helix-Coiled-Coil-Helix Domain Containing 6) is a Protein Coding gene. Diseases associated with CHCHD6 include Charcot-Marie-Tooth Disease, Type 2E. An important paralog of this gene is CHCHD3.
<b>Molecular Mass</b>	52.9 kDa
<b>AA Sequence</b>	MGSTESSEGRRVVSGVDEEERVRVLQGVRLSENVVNRMKPSSPPPAPTSSTFGL QDGNLRAPHKESTLPRSGSSGGQQPSGMKEGVKRYEQEHAAIQDKLFQVAKRERE AATKHSKASLPTGEGSISHEEQKSVRLARELESREAELRRRDTFYKEQLERIERKNA EMYKLSSEQFHEAASKMESTIKPRRVPEVCSGLQAQILHCYRDRPHEVLLCSDLVKA YQRCVSAAHKG
<b>Applications</b>	Enzyme-linked Immunoabsorbent Assay Western Blot (Recombinant protein) Antibody Production Protein Array
<b>Storage</b>	Store at -80 centigrade. Aliquot to avoid repeated freezing and thawing.

 Tel: 1-631-559-9269 1-516-512-3133

 Email: [info@creative-biomart.com](mailto:info@creative-biomart.com)  Fax: 1-631-938-8127

 45-1 Ramsey Road, Shirley, NY 11967, USA

**Storage Buffer** 50 mM Tris-HCl, 10 mM reduced Glutathione, pH=8.0 in the elution buffer.

## GENE INFORMATION

**Gene Name** CHCHD6 coiled-coil-helix-coiled-coil-helix domain containing 6 [ Homo sapiens ]

**Official Symbol** CHCHD6

**Synonyms**

CHCHD6; coiled-coil-helix-coiled-coil-helix domain containing 6; coiled-coil-helix-coiled-coil-helix domain-containing protein 6, mitochondrial; CHCM1; coiled coil helix cristae morphology 1; MGC13016; PPP1R23; protein phosphatase 1; regulatory subunit 23; coiled-coil-helix cristae morphology 1; protein phosphatase 1, regulatory subunit 23; coiled coil helix cristae morphology protein 1; coiled-coil-helix-coiled-coil-helix domain-containing protein 6;

**Gene ID** 84303

**mRNA Refseq** NM\_032343

**Protein Refseq** NP\_115719

**MIM** 615634

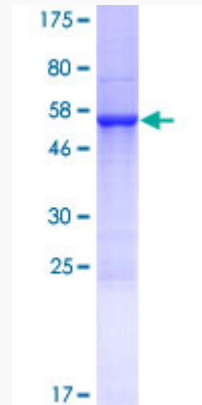
**UniProt ID** Q9BRQ6

 Tel: 1-631-559-9269 1-516-512-3133

 Email: [info@creative-biomart.com](mailto:info@creative-biomart.com)  Fax: 1-631-938-8127

 45-1 Ramsey Road, Shirley, NY 11967, USA

**Quality Control  
Testing**



12.5% SDS-PAGE Stained with Coomassie Blue.

 Tel: 1-631-559-9269 1-516-512-3133

 Email: [info@creative-biomart.com](mailto:info@creative-biomart.com)  Fax: 1-631-938-8127

 45-1 Ramsey Road, Shirley, NY 11967, USA