

Recombinant Human CHCHD6 Protein, Myc/DDK-tagged, C13 and N15-labeled

Cat. No. CHCHD6-6696H **Lot. No.** (See product label)

SPECIFICATION

Product Overview	CHCHD6 MS Standard C13 and N15-labeled recombinant protein (NP_115719) with a C-terminal MYC/DDK tag, was expressed in HEK293 cells.
Species	Human
Source	HEK293
Description	CHCHD6 (Coiled-Coil-Helix-Coiled-Coil-Helix Domain Containing 6) is a Protein Coding gene. Diseases associated with CHCHD6 include Tinea Manuum. An important paralog of this gene is CHCHD3.
Molecular Mass	26.5 kDa
AA Sequence	MGSTESSEGRRVDFGVDEEERVRVLQGVRLSENVVNRMKPESSPPPAPTSSTFGLQDGNLRAPHKESTLPRSGSSGGQQPSGMKEGVKRYEQEHAAIQDKLFQVAKRERE AATKHSKASLPTGEGSISHEEQKSVRLARELESREAELRRRDTFYKEQLERIERKNA EMYKLSSEQFHEAASKMESTIKPRRVEPVCSGLQAQILHCYRDRPHEVLLCSDLVKA YQRCVSAAHKGRTRTRPLEQKLISEEDLAANDILDYKDDDDKV
Purity	> 80% as determined by SDS-PAGE and Coomassie blue staining
Stability	Stable for 3 months from receipt of products under proper storage and handling conditions.

 Tel: 1-631-559-9269 1-516-512-3133

 Email: info@creative-biomart.com  Fax: 1-631-938-8127

 45-1 Ramsey Road, Shirley, NY 11967, USA

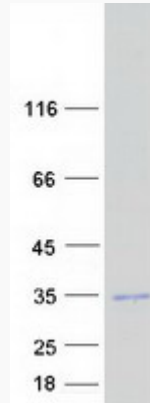
Storage	Store at -80 centigrade. Avoid repeated freeze-thaw cycles.
Concentration	50 µg/mL as determined by BCA
Storage Buffer	100 mM glycine, 25 mM Tris-HCl, pH 7.3.
GENE INFORMATION	
Gene Name	CHCHD6 coiled-coil-helix-coiled-coil-helix domain containing 6 [Homo sapiens (human)]
Official Symbol	CHCHD6
Synonyms	CHCHD6; coiled-coil-helix-coiled-coil-helix domain containing 6; coiled-coil-helix-coiled-coil-helix domain-containing protein 6, mitochondrial; CHCM1; coiled coil helix cristae morphology 1; MGC13016; PPP1R23; protein phosphatase 1; regulatory subunit 23; coiled-coil-helix cristae morphology 1; protein phosphatase 1, regulatory subunit 23; coiled coil helix cristae morphology protein 1; coiled-coil-helix-coiled-coil-helix domain-containing protein 6;
Gene ID	84303
mRNA Refseq	NM_032343
Protein Refseq	NP_115719
MIM	615634
UniProt ID	Q9BRQ6

 Tel: 1-631-559-9269 1-516-512-3133

 Email: info@creative-biomart.com  Fax: 1-631-938-8127

 45-1 Ramsey Road, Shirley, NY 11967, USA

SDS-PAGE



 Tel: 1-631-559-9269 1-516-512-3133

 Email: info@creative-biomart.com  Fax: 1-631-938-8127

 45-1 Ramsey Road, Shirley, NY 11967, USA