

Recombinant Full Length Human CHD1L Protein, C-Flag-tagged

Cat. No. CHD1L-1334HFL **Lot. No.** (See product label)

SPECIFICATION

Product Overview	Recombinant Full Length Human CHD1L Protein, fused to Flag-tag at C-terminus, was expressed in Mammalian cells.
Species	Human
Source	Mammalian Cells
Description	This gene encodes a DNA helicase protein involved in DNA repair. The protein converts ATP to add poly(ADP-ribose) as it regulates chromatin relaxation following DNA damage. Overexpression of this gene has been linked to several types of cancers.
Form	25 mM Tris HCl, pH 7.3, 100 mM glycine, 10% glycerol.
Molecular Mass	100.8 kDa
AA Sequence	MERAGATSRGGQAPGFLLRLHTEGRAEAARVQEQLRQWGLTGIHLRSYQLEGVN WLAQRFHCQNGCILG DEMGLGKTCQTIALFIYLAGRLNDEGPFLILCPLSVLSNWKE EMQRFAPGLSCVTYAGDKEERACLQQDL KQESRFHVLLTTYEICKDASFLKSFPW SVLVVDEAHRLKNQSSLLHKTLSSEFSVVFSLLLTGTPIQNSL QELYSLLSFVEPDLFS KEEVGDFIQRYQDIEKESESASELHKLLQPFLRRVKAEVATELPPKTEVVIYH GMSA LQKKYYKAILMKDLDAFENETAKKVKLQNILSQLRKCVDPYLFDFGVEPEPFEVGDH LTEASGKLH LLDKLLAFLYSGGHRVLLFSQMTQMLDILQDYMDYRGYSYERVDGSV RGEERHLAIKNFGQQPIFVFLLS TRAGGVGMNLTAADTVFVDSDFNPQNDLQAAAR

 Tel: 1-631-559-9269 1-516-512-3133

 Email: info@creative-biomart.com  Fax: 1-631-938-8127

 45-1 Ramsey Road, Shirley, NY 11967, USA

AHRIGQNKSVKIVIRLIGRDTVEEIVYRKAASKLQLT NMIEGGHFTLGAQKPAADADL
 QLSEILKFGLDKLLASEGSTMDEIDLESILGETKDGQWVSDALPAAEG GSRDQEEGK
 NHMYLFEGKDYSKEPSKEDRKSFEQLVNLQKTLLEKASQEGRSLRNKGSVLIPGLVE
 GSTK RKRVLSPPELEDQRQKKRQEAAAKRRRLIEEKKRQKEEAHKKKMAWWESNN
 YQSFCLPSESEPEDLENG EESSAELDYQDPDATSLKYVSGDVTHPQAGAEDALIV
 HCVDDSGHWGRGGLFTALEKRSAEPRKIYELAG KMKDLSLGGVLLFPVDDKESRN
 KGQDLLALIVAQHRDRSNVLSGIKMAALEEGLKKIFLAAKKKKASVHL
 PRIGHATKGFNWWYGTERLIRKHLAARGIPTYYFPRSKSAVLHAQSSSSSRQLVPT
 RTRPLEQKLISEEDLAANDILDYKDDDDKV

Purity > 80% as determined by SDS-PAGE and Coomassie blue staining.

Stability Stable for 12 months from the date of receipt of the product under proper storage and handling conditions. Avoid repeated freeze-thaw cycles.

Storage Store at -80 centigrade.

Concentration >50 ug/mL as determined by microplate BCA method.

Preparation Recombinant protein was captured through anti-DDK affinity column followed by conventional chromatography steps.

Full Length Full L.

GENE INFORMATION

Gene Name CHD1L chromodomain helicase DNA binding protein 1 like [Homo sapiens (human)]

Official Symbol CHD1L

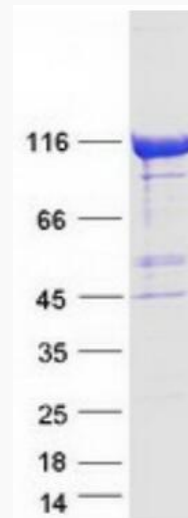
Synonyms ALC1; CHDL

 Tel: 1-631-559-9269 1-516-512-3133

 Email: info@creative-biomart.com  Fax: 1-631-938-8127

 45-1 Ramsey Road, Shirley, NY 11967, USA

Gene ID	9557
mRNA Refseq	NM_004284.6
Protein Refseq	NP_004275.4
MIM	613039
UniProt ID	Q86WJ1



Coomassie blue staining of purified CHD1L protein.

Tel: 1-631-559-9269 1-516-512-3133

Email: info@creative-biomart.com Fax: 1-631-938-8127

45-1 Ramsey Road, Shirley, NY 11967, USA