

Recombinant Human CHD1L Protein (704-897 aa), His-SUMO-tagged

Cat. No. CHD1L-2043H Lot. No. (See product label)

SPECIFICATION

Product Overview Recombinant Human CHD1L Protein (704-897 aa) is produced by E. coli expression system. This protein is fused with a 6xHis-SUMO tag at the N-terminal. Research Area: Epigenetics and Nuclear Signaling. Protein Description: Partial.

Species Human

Source E.coli

ProteinLength 704-897 aa

Description DNA helicase which plays a role in chromatin-remodeling following DNA damage. Targeted to sites of DNA damage through interaction with poly(ADP-ribose) and functions to regulate chromatin during DNA repair. Able to catalyze nucleosome sliding in an ATP-dependent manner. Helicase activity is strongly stimulated upon poly(ADP-ribose)-binding.

Form Tris-based buffer,50% glycerol

Molecular Mass 37.3 kDa

AA Sequence
 SAELDYQDPDATSLKYVSGDVTHPQAGAEDALIVHCVDDSGHWGRGGLFTALEKR
 SAEPRKIYELAGKMKDLSLGGVLLFPVDDKESRNKGQDLLALIVAQHRDRSNVLSGI
 KMAALEEGLKKIFLAAKKKKASVHLPRIGHATKGFNWWYGTERLIRKHLAARGIPTIYY
 FPRSKSAVLHAQSSSSSRQLVP

 Tel: 1-631-559-9269 1-516-512-3133

 Email: info@creative-biomart.com  Fax: 1-631-938-8127

 45-1 Ramsey Road, Shirley, NY 11967, USA

Purity	> 90% as determined by SDS-PAGE.
Notes	Repeated freezing and thawing is not recommended. Store working aliquots at 4 centigrade for up to one week.
Storage	The shelf life is related to many factors, storage state, buffer ingredients, storage temperature and the stability of the protein itself. Generally, the shelf life of liquid form is 6 months at -20 centigrade/-80 centigrade. The shelf life of lyophilized form is 12 months at -20 centigrade/-80 centigrade.
Concentration	A hardcopy of COA with reconstitution instruction is sent along with the products.

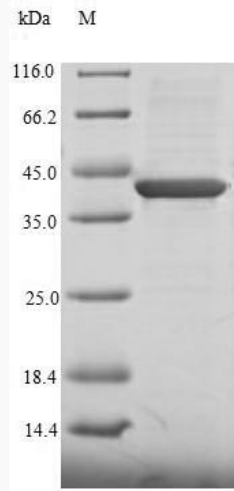
GENE INFORMATION

Gene Name	CHD1L chromodomain helicase DNA binding protein 1-like [Homo sapiens]
Official Symbol	CHD1L
Synonyms	ALC1; CHDL;
Gene ID	9557
mRNA Refseq	NM_024568.2
Protein Refseq	NP_078844.2
MIM	613039
UniProt ID	Q86WJ1

 Tel: 1-631-559-9269 1-516-512-3133

 Email: info@creative-biomart.com  Fax: 1-631-938-8127

 45-1 Ramsey Road, Shirley, NY 11967, USA



(Tris-Glycine gel) Discontinuous SDS-PAGE (reduced) with 5% enrichment gel and 15% separation gel.

 Tel: 1-631-559-9269 1-516-512-3133

 Email: info@creative-biomart.com  Fax: 1-631-938-8127

 45-1 Ramsey Road, Shirley, NY 11967, USA