

# Recombinant Human CHD1L Protein, Myc/DDK-tagged, C13 and N15-labeled

**Cat. No.** CHD1L-2509H    **Lot. No.** (See product label)

## SPECIFICATION

### Product Overview

CHD1L MS Standard C13 and N15-labeled recombinant protein (NP\_004275) with a C-terminal MYC/DDK tag, was expressed in HEK293 cells.

### Species

Human

### Source

HEK293

### Description

This gene encodes a DNA helicase protein involved in DNA repair. The protein converts ATP to add poly(ADP-ribose) as it regulates chromatin relaxation following DNA damage. Overexpression of this gene has been linked to several types of cancers.

### Molecular Mass

100.8 kDa

### AA Sequence

MERAGATSRGGQAPGFLLRLHTEGRAEAARVQEQLRQWGLTGIHLRSYQLEGVN  
 WLAQRFHCQNGCILGDEMGLGKTCQTIALFIYLAGRLNDEGPFLILCPLSVLSNWKE  
 EMQRFAPGLSCVTYAGDKEERACLQQDLKQESRFHVLLTTYEICKDASFLKSFPW  
 SVLVVDEAHRLKNQSSLLHKTLSSEFSVVFSLLLTGTPIQNSLQELYSLLSFVEPDLFSK  
 EEVGDFIQRYQDIEKESASELHKLLQPFLRRVKAEVATELPKKTEVVIYHGMSAL  
 QKYYYKAILMKDLDAFENETAKKVKLQNILSQLRKCVDPYLFVDFGVEPEPFEVGDHL  
 TEASGKLHLLDKLLAFLYSGGHRVLLFSQMTQMLDILQDYMDYRGYSYERVDGSVR  
 GEERHLAIKNFGQQPIFVLLSTRAGGVGMNLTAADTVIFVDSDFNPQNDLQAAARA  
 HRIGQNKSVKIVIRLIGRDTVEEIVYRKAASKLQLTNMIIIEGGHFTLGAQKPAADADLQL

 Tel: 1-631-559-9269    1-516-512-3133

 Email: [info@creative-biomart.com](mailto:info@creative-biomart.com)     Fax: 1-631-938-8127

 45-1 Ramsey Road, Shirley, NY 11967, USA

SEILKFGLDKLLASEGSTMDEIDLESILGETKDGQWVSDALPAAEGGSRDQEEGKNH  
 MYLFEGKDYSEPSKEDRKSFEQLVNLQKTLLEKASQEGRSLRNKGSVLIPGLVEGS  
 TKRKRVLSPEELEDQRQKRQEAAAKRRRLIEEKKRQKEEAHKKKMAWWESNNYQ  
 SFCLPSESEPEDLENGEESSAELDYQDPDATSLKYVSGDVTHPQAGAEDALIVHC  
 VDDSGHWGRGGLFTALEKRSAEPRKIYELAGKMKDLSLGGVLLFPVDDKESRNKG  
 QDLLALIVAQHRDRSNVLSGIKMAALEEGLKKIFLAAKKKKASVHLPRIGHATKGFNW  
 YGTERLIRKHLAARGIPTYYFFPRSKSAVLHAQSSSSSSRQLVPTTRTRPLEQKLISEE  
 DLAANDILDYKDDDDKV

**Purity** > 80% as determined by SDS-PAGE and Coomassie blue staining

**Stability** Stable for 3 months from receipt of products under proper storage and handling conditions.

**Storage** Store at -80 centigrade. Avoid repeated freeze-thaw cycles.

**Concentration** 50 µg/mL as determined by BCA

**Storage Buffer** 100 mM glycine, 25 mM Tris-HCl, pH 7.3.

## GENE INFORMATION

**Gene Name** CHD1L chromodomain helicase DNA binding protein 1-like [ Homo sapiens (human) ]

**Official Symbol** CHD1L

**Synonyms** CHD1L; chromodomain helicase DNA binding protein 1-like; ALC1; CHDL; chromodomain-helicase-DNA-binding protein 1-like; amplified in liver cancer 1; amplified in liver cancer protein 1; EC 3.6.4.12

**Gene ID** 9557

 Tel: 1-631-559-9269 1-516-512-3133

 Email: [info@creative-biomart.com](mailto:info@creative-biomart.com)  Fax: 1-631-938-8127

 45-1 Ramsey Road, Shirley, NY 11967, USA

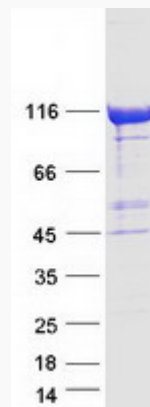
mRNA Refseq [NM\\_004284](#)

Protein Refseq [NP\\_004275](#)

MIM [613039](#)

UniProt ID [Q86WJ1](#)

SDS-PAGE



 Tel: 1-631-559-9269 1-516-512-3133

 Email: [info@creative-biomart.com](mailto:info@creative-biomart.com)  Fax: 1-631-938-8127

 45-1 Ramsey Road, Shirley, NY 11967, USA