

## Recombinant Human CHD2 Protein (257-456), N-His tagged

Cat. No. CHD2-02H Lot. No. (See product label)

### SPECIFICATION

|                         |   |
|-------------------------|---|
| <b>Product Overview</b> | Human recombinant CHD2 (residues 257-456; Genbank Accession # NM_001271.3) expressed as an N-terminal His-fusion protein in E. coli.  |
| <b>Species</b>          | Human   |
| <b>Source</b>           | E.coli  |
| <b>ProteinLength</b>    | 257-456   |
| <b>Description</b>      | <p>The CHD family of proteins is characterized by the presence of chromo (chromatin organization modifier) domains and SNF2-related helicase/ATPase domains. CHD genes alter gene expression possibly by modification of chromatin structure thus altering access of the transcriptional apparatus to its chromosomal DNA template. Alternatively spliced transcript variants encoding distinct isoforms have been found for this gene.</p> |
| <b>Molecular Mass</b>   | 24.1 kDa  |
| <b>Purity</b>           | >90% by SDS-PAGE  |
| <b>Storage</b>          | At -70 centigrade. Thaw quickly and store on ice before use. The remaining, unused, undiluted protein should be snap frozen, for example in a dry/ice ethanol bath or liquid nitrogen. Minimize freeze/thaws if possible, but very low volume aliquots (<5 µL) or storage of diluted protein is not recommended.  |

 Tel: 1-631-559-9269 1-516-512-3133

 Email: [info@creative-biomart.com](mailto:info@creative-biomart.com)  Fax: 1-631-938-8127

 45-1 Ramsey Road, Shirley, NY 11967, USA

**Storage Buffer** Solution of purified recombinant protein in 50 mM Tris HCl, pH 7.5, 500 mM NaCl, 1 mM TCEP, 10% glycerol (v/v)

## GENE INFORMATION

**Gene Name** CHD2 chromodomain helicase DNA binding protein 2 [ Homo sapiens (human) ]

**Official Symbol** CHD2

**Synonyms** CHD2; chromodomain helicase DNA binding protein 2; chromodomain-helicase-DNA-binding protein 2; DKFZp547I1315; DKFZp686E01200; DKFZp781D1727; FLJ38614; CHD-2; ATP-dependent helicase CHD2;

**Gene ID** 1106

**mRNA Refseq** NM\_001271

**Protein Refseq** NP\_001262

**MIM** 602119

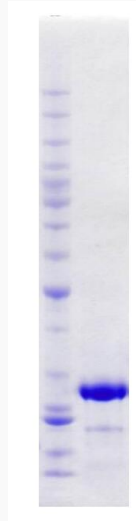
**UniProt ID** O14647

 Tel: 1-631-559-9269 1-516-512-3133

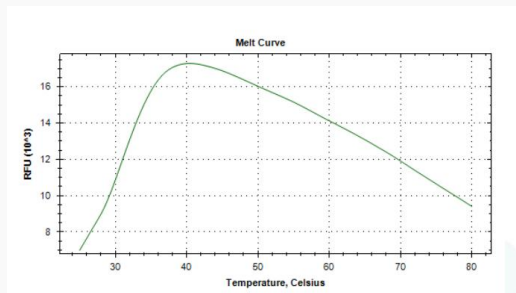
 Email: [info@creative-biomart.com](mailto:info@creative-biomart.com)  Fax: 1-631-938-8127

 45-1 Ramsey Road, Shirley, NY 11967, USA

**Coomassie  
bluestained SDS-  
PAGE (4-12%  
acrylamide) of 4 µg  
of RBC CHD2 (His).**



**Differential Scanning  
Fluorimetry of RBC  
CHD2 (His).**



 Tel: 1-631-559-9269 1-516-512-3133

 Email: [info@creative-biomart.com](mailto:info@creative-biomart.com)  Fax: 1-631-938-8127

 45-1 Ramsey Road, Shirley, NY 11967, USA