

## Recombinant Human CHD7 Protein

Cat. No. CHD7-1216H Lot. No. (See product label)

### SPECIFICATION

<b>Product Overview</b>	Human CHD7 (P39476, 64 amino acids) partial recombinant protein with His tag expressed in Escherichia coli.
<b>Species</b>	Human
<b>Source</b>	E.coli
<b>Description</b>	This gene encodes a protein that contains several helicase family domains. Mutations in this gene have been found in some patients with the CHARGE syndrome. Two transcript variants encoding different isoforms have been found for this gene. [provided by RefSeq, Oct 2015]
<b>Form</b>	Lyophilized
<b>Molecular Mass</b>	9.44 kDa
<b>AA Sequence</b>	MGSSHHHHHHSSGLVPRGSHMATVKFKYKGEEKEVDISKIKKVVWRVGMISFTYDE GGGKTGRGAVSEKDAPKELLQMLEKQKK
<b>Endotoxin</b>	< 0.1 EU/μg
<b>Purity</b>	>= 99% by SDS-PAGE
<b>Applications</b>	SDS-PAGE

 Tel: 1-631-559-9269 1-516-512-3133

 Email: [info@creative-biomart.com](mailto:info@creative-biomart.com)  Fax: 1-631-938-8127

 45-1 Ramsey Road, Shirley, NY 11967, USA

**Storage** Store at -20 centigrade on dry atmosphere. After reconstitution with sterilized water, store at -20 centigrade. Aliquot to avoid repeated freezing and thawing.

**Storage Buffer** No additive

## GENE INFORMATION

**Gene Name** CHD7 chromodomain helicase DNA binding protein 7 [ Homo sapiens ]

**Official Symbol** CHD7

**Synonyms** CHD7; chromodomain helicase DNA binding protein 7; FLJ20357; FLJ20361; KIAA1416;

**Gene ID** 55636

**mRNA Refseq** NM\_017780

**Protein Refseq** NP\_060250

**MIM** 608892

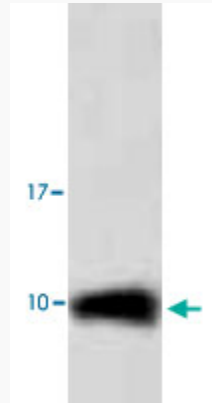
**UniProt ID** Q9P2D1

 Tel: 1-631-559-9269 1-516-512-3133

 Email: [info@creative-biomart.com](mailto:info@creative-biomart.com)  Fax: 1-631-938-8127

 45-1 Ramsey Road, Shirley, NY 11967, USA

**Quality Control  
Testing**



SDS-PAGE Stained with Coomassie Blue

 Tel: 1-631-559-9269 1-516-512-3133

 Email: [info@creative-biomart.com](mailto:info@creative-biomart.com)  Fax: 1-631-938-8127

 45-1 Ramsey Road, Shirley, NY 11967, USA