

## Recombinant Human CHD8 Protein, GST-Tagged

Cat. No. CHD8-1217H Lot. No. (See product label)

### SPECIFICATION

<b>Product Overview</b>	Human CHD8 partial ORF (NP_065971, 1980 a.a. - 2078 a.a.) recombinant protein with GST-tag at N-terminal.
<b>Species</b>	Human
<b>Source</b>	Wheat Germ
<b>Description</b>	This gene encodes a member of the chromodomain-helicase-DNA binding protein family, which is characterized by a SNF2-like domain and two chromatin organization modifier domains. The encoded protein also contains brahma and kismet domains, which are common to the subfamily of chromodomain-helicase-DNA binding proteins to which this protein belongs. This gene has been shown to function in several processes that include transcriptional regulation, epigenetic remodeling, promotion of cell proliferation, and regulation of RNA synthesis. Allelic variants of this gene are associated with autism spectrum disorder. Alternative splicing results in multiple transcript variants. [provided by RefSeq, Dec 2016]
<b>Molecular Mass</b>	36.63 kDa
<b>AA Sequence</b>	EGLKLTfQKHKLmANGVMGDGHPLFHKKKGnRKKLVELEVECMEEPNHLDVDLET RIPVINKVDGTLVGEDAPRRAELEMWLQGHPEFAVDPRFLAYM
<b>Applications</b>	Enzyme-linked Immunoabsorbent Assay Western Blot (Recombinant protein) Antibody Production

 Tel: 1-631-559-9269 1-516-512-3133

 Email: [info@creative-biomart.com](mailto:info@creative-biomart.com)  Fax: 1-631-938-8127

 45-1 Ramsey Road, Shirley, NY 11967, USA

Protein Array

<b>Notes</b>	Best use within three months from the date of receipt of this protein.
<b>Storage</b>	Store at -80 centigrade. Aliquot to avoid repeated freezing and thawing.
<b>Storage Buffer</b>	50 mM Tris-HCl, 10 mM reduced Glutathione, pH=8.0 in the elution buffer.

## GENE INFORMATION

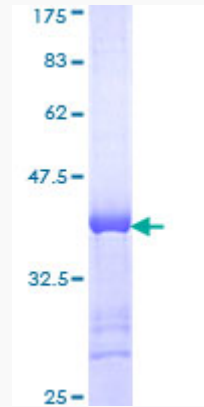
<b>Gene Name</b>	CHD8 chromodomain helicase DNA binding protein 8 [ Homo sapiens ]
<b>Official Symbol</b>	CHD8
<b>Synonyms</b>	CHD8; chromodomain helicase DNA binding protein 8; helicase with SNF2 domain 1, HELSNF1; chromodomain-helicase-DNA-binding protein 8; DUPLIN; KIAA1564; duplin; axis duplication inhibitor; ATP-dependent helicase CHD8; helicase with SNF2 domain 1; HELSNF1; DKFZp686N17164;
<b>Gene ID</b>	57680
<b>mRNA Refseq</b>	NM_001170629
<b>Protein Refseq</b>	NP_001164100
<b>MIM</b>	610528
<b>UniProt ID</b>	Q9HCK8

 Tel: 1-631-559-9269 1-516-512-3133

 Email: [info@creative-biomart.com](mailto:info@creative-biomart.com)  Fax: 1-631-938-8127

 45-1 Ramsey Road, Shirley, NY 11967, USA

**Quality Control  
Testing**



12.5% SDS-PAGE Stained with Coomassie Blue.

 Tel: 1-631-559-9269 1-516-512-3133

 Email: [info@creative-biomart.com](mailto:info@creative-biomart.com)  Fax: 1-631-938-8127

 45-1 Ramsey Road, Shirley, NY 11967, USA