

## Recombinant Human CHDH Protein, GST-Tagged

**Cat. No.** CHDH-1219H    **Lot. No.** (See product label)

### SPECIFICATION

**Product Overview**      Human CHDH full-length ORF (NP\_060867.1, 1 a.a. - 594 a.a.) recombinant protein with GST-tag at N-terminal.

**Species**                      Human

**Source**                        Wheat Germ

**Description**                The protein encoded by this gene is a choline dehydrogenase that localizes to the mitochondrion. Variations in this gene can affect susceptibility to choline deficiency. A few transcript variants have been found for this gene, but the full-length nature of only one has been characterized to date. [provided by RefSeq, Dec 2010]

**Molecular Mass**            91.8 kDa

**AA Sequence**                MWCLLRGLGRPGALARGALGQQQSLGARALASAGSESRDEYSYVVVGAGSAGCV  
LAGRLTEDPAERVLLLEAGPKDVRAGSKRLSWKIHMPAALVANLCDDRYNWCYHTE  
VQRGLDGRVLYWPRGRVWGGSSSLNAMVYVRGHAEDYERWQRQGARGWDYAH  
CLPYFRKAQGHELGASRYRGADGPLRVSRGKTNHPLHCAFLEATQQAGYPLTEDM  
NGFQQEGFGWMDMTIHEGKRWSAACAYLHPALSRTNLKAEAETLSRVLFEGTRA  
VGVEYVKNGQSHRAYASKEVILSGGAINSPQLLMLSGIGNADDLKKLGIPVVCHLPG  
VGQNLQDHLEIYIQQACTRPITLHSAQKPLRKVCIGLEWLWKFTGEGATAHLETGGFI  
RSQPGVPHPDIQFHFLPSQVIDHGRVPTQQEAYQVHVGP MRGTSVGWLKLR SANP  
QDHPVIQPNYLSTETDIEDFRLCVKLTREIFAQEALAPFRGKELQPGSHIQSDKEIDAF  
VRAKADSAYHPSCTCKMGQPSDPTAVVDPQTRVLGVENLRVVDASIMPSMVSGNL

 Tel: 1-631-559-9269    1-516-512-3133

 Email: [info@creative-biomart.com](mailto:info@creative-biomart.com)     Fax: 1-631-938-8127

 45-1 Ramsey Road, Shirley, NY 11967, USA

NAPTIMIAEKAADIKGGQPALWDKDVPVYKPRTLATQR

**Applications**

Enzyme-linked Immunoabsorbent Assay  
 Western Blot (Recombinant protein)  
 Antibody Production  
 Protein Array

**Notes**

Best use within three months from the date of receipt of this protein.

**Storage**

Store at -80 centigrade. Aliquot to avoid repeated freezing and thawing.

**Storage Buffer**

50 mM Tris-HCl, 10 mM reduced Glutathione, pH=8.0 in the elution buffer.

**GENE INFORMATION**

**Gene Name**

CHDH choline dehydrogenase [ Homo sapiens ]

**Official Symbol**

CHDH

**Synonyms**

CHDH; choline dehydrogenase; choline dehydrogenase, mitochondrial; CDH; CHD;

**Gene ID**

55349

**mRNA Refseq**

NM\_018397

**Protein Refseq**

NP\_060867

**UniProt ID**

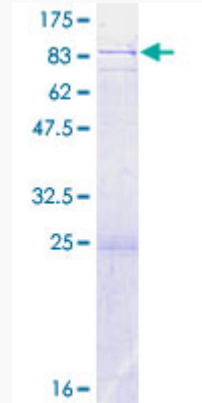
Q8NE62

 Tel: 1-631-559-9269 1-516-512-3133

 Email: [info@creative-biomart.com](mailto:info@creative-biomart.com)  Fax: 1-631-938-8127

 45-1 Ramsey Road, Shirley, NY 11967, USA

**Quality Control  
Testing**



12.5% SDS-PAGE Stained with Coomassie Blue.

 Tel: 1-631-559-9269 1-516-512-3133

 Email: [info@creative-biomart.com](mailto:info@creative-biomart.com)  Fax: 1-631-938-8127

 45-1 Ramsey Road, Shirley, NY 11967, USA