

Recombinant Full Length Human CHEK1 Protein, C-Flag-tagged

Cat. No. CHEK1-1024HFL **Lot. No.** (See product label)

SPECIFICATION

| | |
|-------------------------|---|
| Product Overview | Recombinant Full Length Human CHEK1 Protein, fused to Flag-tag at C-terminus, was expressed in Mammalian cells. |
| Species | Human |
| Source | Mammalian Cells |
| Description | The protein encoded by this gene belongs to the Ser/Thr protein kinase family. It is required for checkpoint mediated cell cycle arrest in response to DNA damage or the presence of unreplicated DNA. This protein acts to integrate signals from ATM and ATR, two cell cycle proteins involved in DNA damage responses, that also associate with chromatin in meiotic prophase I. Phosphorylation of CDC25A protein phosphatase by this protein is required for cells to delay cell cycle progression in response to double-strand DNA breaks. Several alternatively spliced transcript variants have been found for this gene. |
| Form | 25 mM Tris HCl, pH 7.3, 100 mM glycine, 10% glycerol. |
| Molecular Mass | 54.3 kDa |
| AA Sequence | MAVPFVEDWDLVQTLGEGAYGEVQLAVNRVTEEAVAVKIVDMKRAVDCPENIKKEI CINKMLNHENVVKF YGHRREGNIQYLFLEYCSGGELFDRIEPDIGMPEPDAQRFFH QLMAGVVYLHGIGITHRDIKPENLLLDE RDNLKISDFGLATVFRYNNRERLLNKMCG TLPYVAPPELLKRREFHAEPVDVWSCGIVLTAMLGELPWDQ PSDSCQEYSDWKEK |

 Tel: 1-631-559-9269 1-516-512-3133

 Email: info@creative-biomart.com  Fax: 1-631-938-8127

 45-1 Ramsey Road, Shirley, NY 11967, USA

KTYLNPWKKIDSAPLALLHKILVENPSARITIPDIKKDRWYNKPLKKGAKRPRVTS GG
 VSESPSGFSKHIQSNLDFSPVNSASSEENVKYSSSQPEPRTGLSLWDTSPSYIDKLV
 QGISFSQPTCP DHMLLNSQLLGTGSSQNPWQRLVKRMTRFFTKLDADKSYQCLK
 ETCEKLG YQWKKSCMNQVTISTTDRR
 NNKLIFKVN LLEMDDKILVDFRLSKGDGLEFKRHFLKIKGKLIDIVSSQKVWLPATTRT
 RPLEQKLISEEDLAANDILDYKDDDDKV

| | |
|-------------------------|---|
| Purity | > 80% as determined by SDS-PAGE and Coomassie blue staining. |
| Stability | Stable for 12 months from the date of receipt of the product under proper storage and handling conditions. Avoid repeated freeze-thaw cycles. |
| Storage | Store at -80 centigrade. |
| Concentration | >50 ug/mL as determined by microplate BCA method. |
| Preparation | Recombinant protein was captured through anti-DDK affinity column followed by conventional chromatography steps. |
| Protein Families | Druggable Genome, Protein Kinase, Stem cell - Pluripotency |
| Protein Pathways | Cell cycle, p53 signaling pathway |
| Full Length | Full L. |

GENE INFORMATION

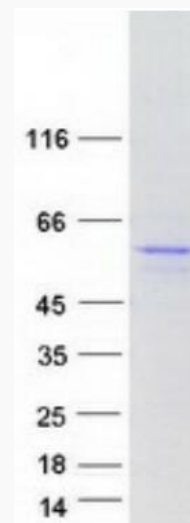
| | |
|------------------------|--|
| Gene Name | CHEK1 checkpoint kinase 1 [Homo sapiens (human)] |
| Official Symbol | CHEK1 |

 Tel: 1-631-559-9269 1-516-512-3133

 Email: info@creative-biomart.com  Fax: 1-631-938-8127

 45-1 Ramsey Road, Shirley, NY 11967, USA

| | |
|-----------------------|----------------|
| Synonyms | CHK1 |
| Gene ID | 1111 |
| mRNA Refseq | NM_001114122.3 |
| Protein Refseq | NP_001107594.1 |
| MIM | 603078 |
| UniProt ID | O14757 |



Coomassie blue staining of purified CHEK1 protein.

 Tel: 1-631-559-9269 1-516-512-3133

 Email: info@creative-biomart.com  Fax: 1-631-938-8127

 45-1 Ramsey Road, Shirley, NY 11967, USA