

## Active Recombinant Human CHEK1 Protein, GST-His-Tagged

Cat. No. CHEK1-1220H Lot. No. (See product label)

### SPECIFICATION

<b>Product Overview</b>	Human CHEK1 (NM_001274.2, 1 a.a. - 476 a.a.) full-length recombinant protein with GST-His tag expressed in Sf9 cells.
<b>Species</b>	Human
<b>Source</b>	Insect Cells
<b>Description</b>	<p>The protein encoded by this gene belongs to the Ser/Thr protein kinase family. It is required for checkpoint mediated cell cycle arrest in response to DNA damage or the presence of unreplicated DNA. This protein acts to integrate signals from ATM and ATR, two cell cycle proteins involved in DNA damage responses, that also associate with chromatin in meiotic prophase I. Phosphorylation of CDC25A protein phosphatase by this protein is required for cells to delay cell cycle progression in response to double-strand DNA breaks. Several alternatively spliced transcript variants have been found for this gene. [provided by RefSeq, Oct 2011]</p>
<b>Form</b>	Liquid
<b>Bio-activity</b>	20 pmol/μg x min
<b>Molecular Mass</b>	83.93 kDa
<b>Applications</b>	Functional Study SDS-PAGE

 Tel: 1-631-559-9269 1-516-512-3133

 Email: [info@creative-biomart.com](mailto:info@creative-biomart.com)  Fax: 1-631-938-8127

 45-1 Ramsey Road, Shirley, NY 11967, USA

<b>Storage</b>	Store at -80 centigrade. Aliquot to avoid repeated freezing and thawing
<b>Concentration</b>	0.109 µg/µL
<b>Storage Buffer</b>	In 50 mM Tris-HCl, 100 mM NaCl, pH 8.0. (5 mM DTT, 15 mM reduced glutathione, 20% glycerol)

## GENE INFORMATION

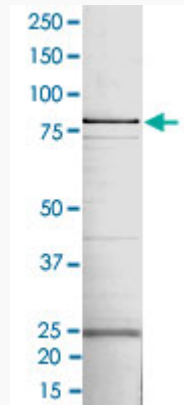
<b>Gene Name</b>	CHEK1 checkpoint kinase 1 [ Homo sapiens ]
<b>Official Symbol</b>	CHEK1
<b>Synonyms</b>	CHEK1; checkpoint kinase 1; CHK1 (checkpoint, S.pombe) homolog, CHK1 checkpoint homolog (S. pombe); serine/threonine-protein kinase Chk1; CHK1; Chk1-S; checkpoint kinase-1; CHK1 checkpoint homolog; cell cycle checkpoint kinase; Checkpoint, S. pombe, homolog of, 1;
<b>Gene ID</b>	1111
<b>mRNA Refseq</b>	NM_001114121
<b>Protein Refseq</b>	NP_001107593
<b>MIM</b>	603078
<b>UniProt ID</b>	O14757

 Tel: 1-631-559-9269 1-516-512-3133

 Email: [info@creative-biomart.com](mailto:info@creative-biomart.com)  Fax: 1-631-938-8127

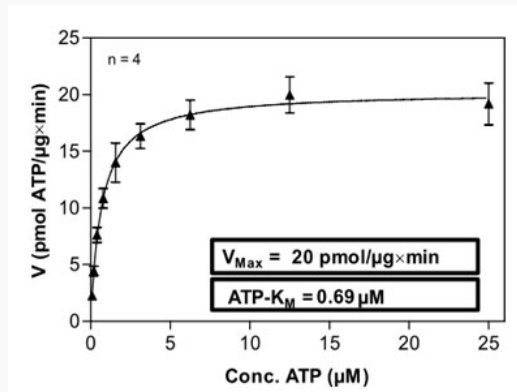
 45-1 Ramsey Road, Shirley, NY 11967, USA

**Quality Control  
Testing**



2 µg/lane SDS-PAGE Stained with Coomassie Blue

**Result of activity  
analysis**



Tel: 1-631-559-9269 1-516-512-3133

Email: [info@creative-biomart.com](mailto:info@creative-biomart.com) Fax: 1-631-938-8127

45-1 Ramsey Road, Shirley, NY 11967, USA