

Recombinant Human CHEK1 Protein, GST-Tagged

Cat. No. CHEK1-1221H Lot. No. (See product label)

SPECIFICATION

Product Overview	Human CHEK1 full-length ORF (AAH04202, 1 a.a. - 476 a.a.) recombinant protein with GST-tag at N-terminal.
Species	Human
Source	Wheat Germ
Description	The protein encoded by this gene belongs to the Ser/Thr protein kinase family. It is required for checkpoint mediated cell cycle arrest in response to DNA damage or the presence of unreplicated DNA. This protein acts to integrate signals from ATM and ATR, two cell cycle proteins involved in DNA damage responses, that also associate with chromatin in meiotic prophase I. Phosphorylation of CDC25A protein phosphatase by this protein is required for cells to delay cell cycle progression in response to double-strand DNA breaks. Several alternatively spliced transcript variants have been found for this gene. [provided by RefSeq, Oct 2011]
Molecular Mass	77.88 kDa
AA Sequence	MAVPFVEDWDLVQTLGEGAYGEVQLAVNRVTEEA VAVKIVDMKRAVDCPENIKKEI CINKMLNHENVVKFYGHRREGNIQYLFLEYCSGGELFDRIEPDIGMPEPDAQRFFHQ LMAGVVYLHGIGITHRDIKPENLLLDERDNLKISDFGLATVFRYNNRERLLNKMCGTL PYVAPELLKRREFHAEPVDVWSCGIVLTAMLGELPWDQPSDSCQEYSDWKEKKT YLNPKWKIDSAPLALLHKILVENPSARITIPDIKKDRWYNKPLKKGAKRPRVTSGGVS ESPSGFSKHIQSNLDFSPVNSASSEENVKYSSSQPEPRTGLSLWDTSPSYIDKLVQG

 Tel: 1-631-559-9269 1-516-512-3133

 Email: info@creative-biomart.com  Fax: 1-631-938-8127

 45-1 Ramsey Road, Shirley, NY 11967, USA

ISFSQPTCPDHMLLNSQLLGTGPGSSQNPWQRLVKRMTRFFTKLDADKPYQCLKETR
 EKLGYQWKKSCMNQVTISTTDRRNNKLIFKVNLLMDDKILVDFRLSKGDDGLEFKRH
 FLKIKGKLIDIVSSQKVWLPAT

Applications
 Enzyme-linked Immunoabsorbent Assay
 Western Blot (Recombinant protein)
 Antibody Production
 Protein Array

Storage Store at -80 centigrade. Aliquot to avoid repeated freezing and thawing.

Storage Buffer 50 mM Tris-HCl, 10 mM reduced Glutathione, pH=8.0 in the elution buffer.

GENE INFORMATION

Gene Name CHEK1 checkpoint kinase 1 [Homo sapiens]

Official Symbol CHEK1

Synonyms CHEK1; checkpoint kinase 1; CHK1 (checkpoint, S.pombe) homolog, CHK1 checkpoint homolog (S. pombe); serine/threonine-protein kinase Chk1; CHK1; Chk1-S; checkpoint kinase-1; CHK1 checkpoint homolog; cell cycle checkpoint kinase; Checkpoint, S. pombe, homolog of, 1;

Gene ID 1111

mRNA Refseq NM_001114121

Protein Refseq NP_001107593

MIM 603078

 Tel: 1-631-559-9269 1-516-512-3133

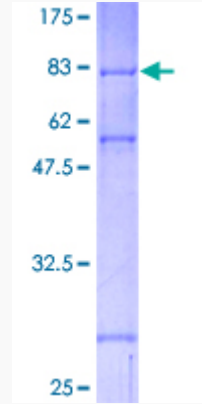
 Email: info@creative-biomart.com  Fax: 1-631-938-8127

 45-1 Ramsey Road, Shirley, NY 11967, USA


UniProt ID

O14757

Quality Control
Testing



12.5% SDS-PAGE Stained with Coomassie Blue.

 Tel: 1-631-559-9269 1-516-512-3133

 Email: info@creative-biomart.com  Fax: 1-631-938-8127

 45-1 Ramsey Road, Shirley, NY 11967, USA