

## Active Recombinant Human CHEK1 Protein, GST-tagged

Cat. No. CHEK1-229H Lot. No. (See product label)

### SPECIFICATION

<b>Product Overview</b>	Active Recombinant Human CHEK1 Protein(AAM78553.1) (Met1-Thr476) was expressed in Insect Cells, fused with the GST tag at the N-terminus.
<b>Species</b>	Human
<b>Source</b>	Insect Cells
<b>ProteinLength</b>	1-476 aa
<b>Form</b>	Supplied as sterile 20mM Tris, 500mM NaCl, pH 7.4, 10% glycerol, 2mM GSH.
<b>Bio-activity</b>	The specific activity was determined to be 32 nmol/min/mg using CHKtide peptide (KKKVSRSGLYRSPSPENLNRPR) as substrate.
<b>Molecular Mass</b>	The recombinant human CHK1/GST chimera consists of 700 amino acids and predicts a molecular mass of 80.7kDa. It migrates as an approxiamtely 80 KDa band as predicted in SDS-PAGE under reducing conditions.
<b>Endotoxin</b>	< 1.0 EU per µg protein as determined by the LAL method.
<b>Purity</b>	> 95 % as determined by SDS-PAGE
<b>Storage</b>	Store it under sterile conditions at -20°C to -80°C upon receiving. Recommend to aliquot the protein into smaller quantities for optimal storage. Avoid repeated freeze-thaw cycles.

 Tel: 1-631-559-9269 1-516-512-3133

 Email: [info@creative-biomart.com](mailto:info@creative-biomart.com)  Fax: 1-631-938-8127

 45-1 Ramsey Road, Shirley, NY 11967, USA

**Reconstitution** It is recommended that sterile water be added to the vial to prepare a stock solution of 0.2 ug/ul. Centrifuge the vial at 4°C before opening to recover the entire contents.

## GENE INFORMATION

**Gene Name** CHEK1 checkpoint kinase 1 [ Homo sapiens ]

**Official Symbol** CHEK1

**Synonyms** CHEK1; checkpoint kinase 1; CHK1 (checkpoint, S.pombe) homolog , CHK1 checkpoint homolog (S. pombe); serine/threonine-protein kinase Chk1; CHK1; Chk1-S; checkpoint kinase-1; CHK1 checkpoint homolog; cell cycle checkpoint kinase; Checkpoint, S. pombe, homolog of, 1;

**Gene ID** 1111

**mRNA Refseq** NM\_001114121

**Protein Refseq** NP\_001107593

**MIM** 603078

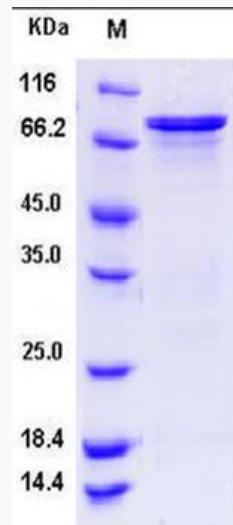
**UniProt ID** O14757

 Tel: 1-631-559-9269 1-516-512-3133

 Email: [info@creative-biomart.com](mailto:info@creative-biomart.com)  Fax: 1-631-938-8127

 45-1 Ramsey Road, Shirley, NY 11967, USA

**SDS-PAGE**



 Tel: 1-631-559-9269 1-516-512-3133

 Email: [info@creative-biomart.com](mailto:info@creative-biomart.com)  Fax: 1-631-938-8127

 45-1 Ramsey Road, Shirley, NY 11967, USA