

Recombinant Human CHERP Protein, GST-Tagged

Cat. No. CHERP-1225H Lot. No. (See product label)

SPECIFICATION

Product Overview	Human CHERP full-length ORF (AAH21294.1, 1 a.a. - 884 a.a.) recombinant protein with GST-tag at N-terminal.
Species	Human
Source	Wheat Germ
Description	CHERP (Calcium Homeostasis Endoplasmic Reticulum Protein) is a Protein Coding gene. Among its related pathways are mRNA Splicing - Major Pathway and Gene Expression. GO annotations related to this gene include nucleic acid binding and RNA binding.
Molecular Mass	126.4 kDa
AA Sequence	<p>MTMEKQKDNPKFSFLFGGEFYSSYYKCKLALQEQQLICKQQTPELEPAATMPPLPQP PLAPAAPIPPAQQGAPSMDELIQQSQWNLQQEQHLLALRQEQVTA AVAHAVEQQM QKLL EETQLDMNEFDNLLQPIIDTCTKDAISAGKNWMFSNAKSPPHCELMAGHLRNR ITADGAHFELRLHLIYLINDVLHHCQRKQARELLAALQKVVVPIYCTSFLAVEEDKQQK IARLLQLWEKNGYFDDSIQQQLQSPALGLGQYQATLINEYSSVVQPVQLAFQQQIQTL KTQHEEFVTSLAQQQQQQQQQQQLQMPQMEAEVKATPPPPAPPPAPAPAPAIPP TTQPDDSKPPIQMPGSSEYEAPGGVQDPA AAGPRGPGPHDQIPP NKPPWFDQPHP VAPWGQQQPPEQPPYPHHQGGPPHCPPWNN SHEGMWGEQRGDPGWNGQRDA PWNNQPDAAWNSQFEGPWNSQHEQPPWGGGQREPPFRMQRPPHFRGPFPPHQ QHPQFNQPPHPHNFNRFPFRMQDDFPPRHPFERPPYPHRFDYPQGDFPAEMGP</p>

 Tel: 1-631-559-9269 1-516-512-3133

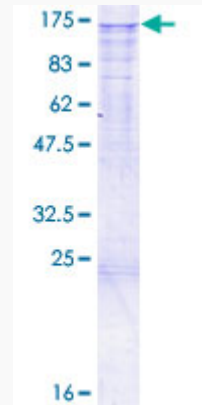
 Email: info@creative-biomart.com  Fax: 1-631-938-8127

 45-1 Ramsey Road, Shirley, NY 11967, USA

Protein Refseq NP_006378

UniProt ID Q8IWX8

**Quality Control
Testing**



12.5% SDS-PAGE Stained with Coomassie Blue.

 Tel: 1-631-559-9269 1-516-512-3133

 Email: info@creative-biomart.com  Fax: 1-631-938-8127

 45-1 Ramsey Road, Shirley, NY 11967, USA