

Recombinant Full Length Human CHGA Protein, C-Flag-tagged

Cat. No. CHGA-1353HFL **Lot. No.** (See product label)

SPECIFICATION

Product Overview	Recombinant Full Length Human CHGA Protein, fused to Flag-tag at C-terminus, was expressed in Mammalian cells.
Species	Human
Source	Mammalian Cells
Description	The protein encoded by this gene is a member of the chromogranin/secretogranin family of neuroendocrine secretory proteins. It is found in secretory vesicles of neurons and endocrine cells. This gene product is a precursor to three biologically active peptides; vasostatin, pancreastatin, and parastatin. These peptides act as autocrine or paracrine negative modulators of the neuroendocrine system. Two other peptides, catestatin and chromofungin, have antimicrobial activity and antifungal activity, respectively. Two transcript variants encoding different isoforms have been found for this gene.
Form	25 mM Tris HCl, pH 7.3, 100 mM glycine, 10% glycerol.
Molecular Mass	48.9 kDa
AA Sequence	MRSAAVLALLLCAGQVTALPVNSPMNKGDTEVMKCIVEVISDTLSKPSPMPVVSQECF ETLRGDERILSIL RHQNLKELQDLALQGAKERAHQKQKHSGFEDELSEVLENQSS QAEKKEAVEEPSSKDVMEKREDSKEAE KSGEATDGARPQALPEPMQESKAEGNN QAPGEEEEEEEEATNTHPPASLPSQKYPGPQAEGDSEGLSQGL VDREKGLSAEPG WQAKREEEEEEEEEAEAGEEAVPEEEGPTVVLNPHPSLGYKEIRKGESRSEALAVD

 Tel: 1-631-559-9269 1-516-512-3133

 Email: info@creative-biomart.com  Fax: 1-631-938-8127

 45-1 Ramsey Road, Shirley, NY 11967, USA

GA GKPGAEAAQDPEGKGEQEHSQQKEEEEEMAVVPQGLFRGGKSGELEQEEERL
 SKEWEDSKRWSKMDQLAK ELTAEKRLEGQEEEEEDNRDSSMKLSFRARAYGFRGP
 GPQLRRGW RPSSREDSLEAGLPLQVRGYPEEKKE
 EEGSANRRPEDQELESLSAIEAELEKVAHQLQALRRGTRTRPLEQKLISEEDLAANDI
 LDYKDDDDKV

Purity	> 80% as determined by SDS-PAGE and Coomassie blue staining.
Stability	Stable for 12 months from the date of receipt of the product under proper storage and handling conditions. Avoid repeated freeze-thaw cycles.
Storage	Store at -80 centigrade.
Concentration	>50 ug/mL as determined by microplate BCA method.
Preparation	Recombinant protein was captured through anti-DDK affinity column followed by conventional chromatography steps.
Protein Families	Druggable Genome, Secreted Protein
Full Length	Full L.

GENE INFORMATION

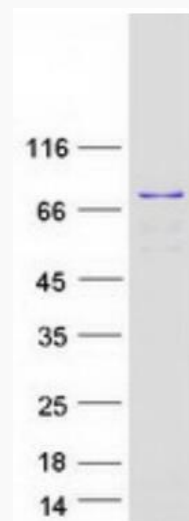
Gene Name	CHGA chromogranin A [Homo sapiens (human)]
Official Symbol	CHGA
Synonyms	CGA; PHE5; PHES
Gene ID	1113

mRNA Refseq [NM_001275.4](#)


Protein Refseq [NP_001266.1](#)

MIM [118910](#)

UniProt ID [P10645](#)



Coomassie blue staining of purified CHGA protein.

 Tel: 1-631-559-9269 1-516-512-3133

 Email: info@creative-biomart.com  Fax: 1-631-938-8127

 45-1 Ramsey Road, Shirley, NY 11967, USA