

# Recombinant Full Length Human CHI3L1 Protein, His tagged

Cat. No. CHI3L1-03HFL Lot. No. (See product label)

## SPECIFICATION

<b>Product Overview</b>	Recombinant human CHI3L1, fused to His-tag at C-terminus, was expressed in insect cell and purified by using conventional chromatography techniques.
<b>Species</b>	Human
<b>Source</b>	Insect Cells
<b>ProteinLength</b>	1-383 aa
<b>Description</b>	Chitinases catalyze the hydrolysis of chitin, which is an abundant glycopolymer found in insect exoskeletons and fungal cell walls. The glycoside hydrolase 18 family of chitinases includes eight human family members. This gene encodes a glycoprotein member of the glycosyl hydrolase 18 family. The protein lacks chitinase activity and is secreted by activated macrophages, chondrocytes, neutrophils and synovial cells. The protein is thought to play a role in the process of inflammation and tissue remodeling.
<b>Form</b>	Liquid
<b>Molecular Mass</b>	41.4 kDa (370aa)
<b>AA Sequence</b>	YKLVCCYYTSWSQYREGDGSCFPDALDRFLCTHIIYSFANISNDHIDTWEWNDVTLYG MLNTLKNRNP NLKTLLSVGGWNFGSQRFSKIASNTQSRRTFIKSVPPFLRTHGFDGL DLAWLYPGRGDKQHFTTLLIKEMKAEFIKEAQP GKKQLLLSAALSAGKVTIDSSYDIKI SQHLDFISIMTYDFHGAWRGTTGHHSPLFRGQEDASPDRFSNTDYAVGYMLRLGAP

 Tel: 1-631-559-9269 1-516-512-3133

 Email: [info@creative-biomart.com](mailto:info@creative-biomart.com)  Fax: 1-631-938-8127

 45-1 Ramsey Road, Shirley, NY 11967, USA

ASKLVMGIPTFGRSFTLASSETGVGAPISGPGIPGRFTKEAGTLAYYEICDFLRGATV  
 HRILGQQVPYATKGNQWVGYYDDQESVKSKVQYLKDRQLAGAMVWALDLDLDDFQGS  
 FCGQDLRFPLTNAIKDALAAT

**Endotoxin** <1.0 EU/μg of the protein by the LAL method.

**Purity** > 90% by SDS-PAGE

**Applications** SDS-PAGE

**Storage** Can be stored at +2 to +8 centigrade for 1 week. For long term storage, aliquot and store at -20 to -80 centigrade. Avoid repeated freezing and thawing cycles.

**Storage Buffer** Phosphate-Buffered Saline (pH 7.4) containing 10% glycerol, 1 mM DTT

**Concentration** 0.25 mg/mL (determined by absorbance at 280nm)

**Reference** 1. Hakala BE., et al. (1993) J Biol Chem 268:25803-25810. 2. Eurich K., et al. (2009) World J Gastroenterol. 15:5249-5259.

## GENE INFORMATION

**Gene Name** CHI3L1 chitinase 3-like 1 (cartilage glycoprotein-39) [ Homo sapiens (human) ]

**Official Symbol** CHI3L1

**Synonyms** CHI3L1; chitinase 3-like 1 (cartilage glycoprotein-39); chitinase-3-like protein 1; GP39; YKL40; 39 kDa synovial protein; cartilage glycoprotein 39; ASRT7; GP-39; CGP-39; YKL-40; YYL-40; HC-gp39; HCGP-3P; hCGP-39; FLJ38139; DKFZp686N19119

**Gene ID** 1116

 Tel: 1-631-559-9269 1-516-512-3133

 Email: [info@creative-biomart.com](mailto:info@creative-biomart.com)  Fax: 1-631-938-8127

 45-1 Ramsey Road, Shirley, NY 11967, USA

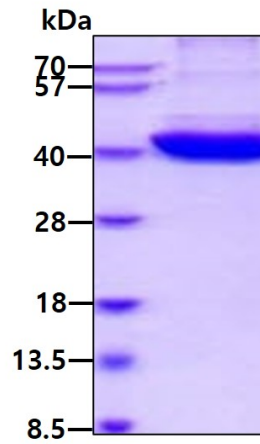
mRNA Refseq [NM\\_001276](#)

Protein Refseq [NP\\_001267](#)

MIM [601525](#)

UniProt ID [P36222](#)

#### SDS-PAGE



3  $\mu$ g by SDS-PAGE under reducing condition and visualized by coomassie blue stain.

 Tel: 1-631-559-9269 1-516-512-3133

 Email: [info@creative-biomart.com](mailto:info@creative-biomart.com)  Fax: 1-631-938-8127

 45-1 Ramsey Road, Shirley, NY 11967, USA