

Recombinant Human CHI3L1 Protein, His-SUMO/MYC-tagged

Cat. No. CHI3L1-1166H **Lot. No.** (See product label)

SPECIFICATION

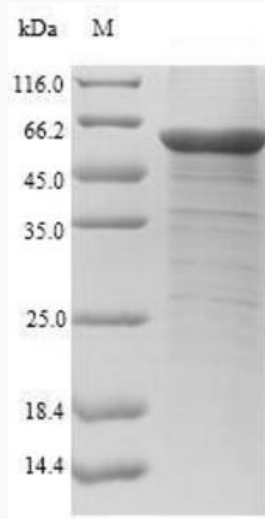
Product Overview	Recombinant Human CHI3L1 Protein (22-383aa) was expressed in E. coli with N-terminal 10xHis-SUMO-tag and C-terminal Myc-tag.
Species	Human
Source	E.coli
ProteinLength	22-383 a.a.
Form	Tris-based buffer, 50% glycerol.
Molecular Mass	60.5 kDa
AA Sequence	YKLVCCYYTSWSQYREGDGSCFPDALDRFLCTHIIYSFANISNDHIDTWEWNDVTLYG MLNLTlKNRNPnlKtllsvGGWNFGSQRFSKIASNTQSRRTFIKSVPPFLRTHGFDGL DLAWLYPGRRDKQHFTTLIKEMKAEFIKEAQPgkkqlllSaalsagkvtIDSSYDIaKI SQHLDFISIMTYDFHGAWRGTTGHHSPLFRGQEDASpDRFSNTDYAVGYMLRLGAP ASKLVMGIPTFGRSFTLAsSETGVGAPISGPgIPGRFTKEAGTLAYYEICDFLRGATV HRILGQQVPYATKGNQWVGyDDQESVkskvqYLKDRQLAGAMVWALDLDdDFQGS FCGQDLRFPLTNAIKDALAAT
Purity	Greater than 90% as determined by SDS-PAGE.
Storage	The shelf life of liquid form is 6 months at -20 centigrade/-80 centigrade. The shelf life of lyophilized form is 12 months at -20 centigrade/-80 centigrade.

 Tel: 1-631-559-9269 1-516-512-3133

 Email: info@creative-biomart.com  Fax: 1-631-938-8127

 45-1 Ramsey Road, Shirley, NY 11967, USA

GENE INFORMATION**Gene Name** CHI3L1 chitinase 3-like 1 (cartilage glycoprotein-39) [Homo sapiens]**Official Symbol** CHI3L1**Synonyms** CHI3L1; chitinase 3-like 1 (cartilage glycoprotein-39); chitinase-3-like protein 1; GP39; YKL40; 39 kDa synovial protein; cartilage glycoprotein 39; ASRT7; GP-39; CGP-39; YKL-40; YYL-40; HC-gp39; HCGP-3P; hCGP-39; FLJ38139; DKFZp686N19119**Gene ID** 1116**mRNA Refseq** NM_001276**Protein Refseq** NP_001267**MIM** 601525**UniProt ID** P36222 Tel: 1-631-559-9269 1-516-512-3133 Email: info@creative-biomart.com  Fax: 1-631-938-8127 45-1 Ramsey Road, Shirley, NY 11967, USA



 Tel: 1-631-559-9269 1-516-512-3133

 Email: info@creative-biomart.com  Fax: 1-631-938-8127

 45-1 Ramsey Road, Shirley, NY 11967, USA