

Recombinant Human CHI3L1 Protein (Tyr22-Thr383), C-His tagged, Animal-free, Carrier-free

Cat. No. CHI3L1-11H Lot. No. (See product label)

SPECIFICATION

Product Overview	Recombinant Human CHI3L1 Protein (Tyr22-Thr383) with C-His tag was expressed in E. coli and Animal-free as well as Carrier-free.
Species	Human
Source	E.coli
ProteinLength	Tyr22-Thr383
Description	Chitinases and non-enzymatic chitinase-like proteins (CLPs, can bind chitin but cannot digest) belong to Glycoside hydrolase family 18. Human CHI3L1, YKL-40, is a CLP and a 42 kDa protein with 383 amino acid residues. The complex (CHI3L1, IL-13R alpha2 and IL-13) regulate downstream signal transduction pathway related to inflammation, proliferation and metastasis.
Form	Lyophilized
Molecular Mass	The protein has a calculated MW of 41.43 kDa. The protein migrates as 40 kDa under reducing condition (SDS-PAGE analysis).
Endotoxin	< 0.1 EU/μg of the protein by the LAL method.
Purity	>98% as determined by SDS-PAGE analysis.

 Tel: 1-631-559-9269 1-516-512-3133

 Email: info@creative-biomart.com  Fax: 1-631-938-8127

 45-1 Ramsey Road, Shirley, NY 11967, USA

Storage	<p>This product is stable after storage at:</p> <p>-20 centigrade for 12 months in lyophilized state from date of receipt.</p> <p>-20 or -80 centigrade for 1 month under sterile conditions after reconstitution.</p> <p>Avoid repeated freeze/thaw cycles.</p>
Storage Buffer	Lyophilized from a 0.2 µm filtered solution of PBS, pH 7.4.
Reconstitution	It is recommended to reconstitute the lyophilized protein in sterile H ₂ O to a concentration not less than 200 µg/mL and incubate the stock solution for at least 20 min to ensure sufficient re-dissolved.
Shipping	The product is shipped with polar packs. Upon receipt, store it immediately at -20 centigrade or lower for long term storage.

GENE INFORMATION

Gene Name	CHI3L1 chitinase 3-like 1 (cartilage glycoprotein-39) [Homo sapiens (human)]
Official Symbol	CHI3L1
Synonyms	CHI3L1; chitinase 3-like 1 (cartilage glycoprotein-39); chitinase-3-like protein 1; GP39; YKL40; 39 kDa synovial protein; cartilage glycoprotein 39; ASRT7; GP-39; CGP-39; YKL-40; YYL-40; HC-gp39; HCGP-3P; hCGP-39; FLJ38139; DKFZp686N19119;
Gene ID	1116
mRNA Refseq	NM_001276
Protein Refseq	NP_001267
MIM	601525

 Tel: 1-631-559-9269 1-516-512-3133

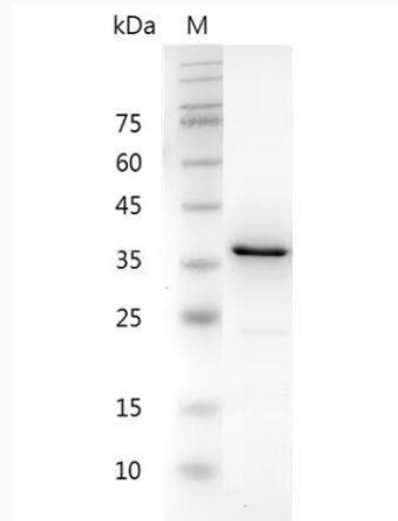
 Email: info@creative-biomart.com  Fax: 1-631-938-8127

 45-1 Ramsey Road, Shirley, NY 11967, USA

UniProt ID

P36222

**SDS-PAGE analysis
of recombinant
human CHI3L1.**



 Tel: 1-631-559-9269 1-516-512-3133

 Email: info@creative-biomart.com  Fax: 1-631-938-8127

 45-1 Ramsey Road, Shirley, NY 11967, USA