

## Recombinant Human CHI3L1 Protein, GST-Tagged

Cat. No. CHI3L1-1232H Lot. No. (See product label)

### SPECIFICATION

<b>Product Overview</b>	Human CHI3L1 full-length ORF (AAH08568.1, 1 a.a. - 383 a.a.) recombinant protein with GST-tag at N-terminal.
<b>Species</b>	Human
<b>Source</b>	Wheat Germ
<b>ProteinLength</b>	1-383 aa
<b>Description</b>	<p>Chitinases catalyze the hydrolysis of chitin, which is an abundant glycopolymer found in insect exoskeletons and fungal cell walls. The glycoside hydrolase 18 family of chitinases includes eight human family members. This gene encodes a glycoprotein member of the glycosyl hydrolase 18 family. The protein lacks chitinase activity and is secreted by activated macrophages, chondrocytes, neutrophils and synovial cells. The protein is thought to play a role in the process of inflammation and tissue remodeling. [provided by RefSeq, Sep 2009]</p>
<b>Molecular Mass</b>	69 kDa
<b>AA Sequence</b>	<p>MGVKASQTGFVVLVLLQCCSAYKLVLCYYTSWSQYREGDGSCFPDALDRFLCTHIIY  SFANISNDHIDTWEWNDVTLYGMLNLTKNRNPNLKTLSSVGGWNFGSQRFSKIASN  TQSRRTFIKSVPPFLRTHGFDGLDLAWLYPGRRDQKHFTTLIKEMKAEFIKEAQP GK  KQLLLSAALSAGKVTIDSSYDIAKISQHLDFISIMTYDFHGAWRGTTGHHSP LFRGQE  DASPDRFSNTDYAVGYMLRLGAPASKLVMGIPTFGRSFTLASSETGVGAPISGPGIP  GRFTKEAGTLAYYEICDFLRGATVHRILGQQVYPYATKGNQWVGYDDQESVKSKVQY</p>

 Tel: 1-631-559-9269 1-516-512-3133

 Email: [info@creative-biomart.com](mailto:info@creative-biomart.com)  Fax: 1-631-938-8127

 45-1 Ramsey Road, Shirley, NY 11967, USA

LKDRQLAGAMVWALDLDLDFQGSFCGQDLRFPLTNAIKDALAAT

**Applications**

Enzyme-linked Immunoabsorbent Assay  
 Western Blot (Recombinant protein)  
 Antibody Production  
 Protein Array

**Storage**

Store at -80 centigrade. Aliquot to avoid repeated freezing and thawing.

**Storage Buffer**

50 mM Tris-HCl, 10 mM reduced Glutathione, pH=8.0 in the elution buffer.

## GENE INFORMATION

**Gene Name**

[CHI3L1 chitinase 3-like 1 \(cartilage glycoprotein-39\) \[ Homo sapiens \]](#)

**Official Symbol**

[CHI3L1](#)

**Synonyms**

CHI3L1; chitinase 3-like 1 (cartilage glycoprotein-39); chitinase-3-like protein 1; GP39; YKL40; 39 kDa synovial protein; cartilage glycoprotein 39; ASRT7; GP-39; CGP-39; YKL-40; YYL-40; HC-gp39; HCGP-3P; hCGP-39; FLJ38139; DKFZp686N19119;

**Gene ID**

[1116](#)

**mRNA Refseq**

[NM\\_001276](#)

**Protein Refseq**

[NP\\_001267](#)

**MIM**

[601525](#)

**UniProt ID**

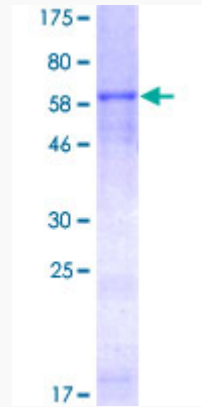
[P36222](#)

 Tel: 1-631-559-9269 1-516-512-3133

 Email: [info@creative-biomart.com](mailto:info@creative-biomart.com)  Fax: 1-631-938-8127

 45-1 Ramsey Road, Shirley, NY 11967, USA

**Quality Control  
Testing**



12.5% SDS-PAGE Stained with Coomassie Blue.

 Tel: 1-631-559-9269 1-516-512-3133

 Email: [info@creative-biomart.com](mailto:info@creative-biomart.com)  Fax: 1-631-938-8127

 45-1 Ramsey Road, Shirley, NY 11967, USA