

# Active Recombinant Full Length Human CHI3L1 Protein, C-Flag-tagged

**Cat. No.** CHI3L1-347HFL    **Lot. No.** (See product label)

## SPECIFICATION

<b>Product Overview</b>	Recombinant Full Length Human CHI3L1 Protein, fused to Flag-tag at C-terminus, was expressed in Mammalian cells.
<b>Species</b>	Human
<b>Source</b>	Mammalian Cells
<b>Description</b>	Chitinases catalyze the hydrolysis of chitin, which is an abundant glycopolymer found in insect exoskeletons and fungal cell walls. The glycoside hydrolase 18 family of chitinases includes eight human family members. This gene encodes a glycoprotein member of the glycosyl hydrolase 18 family. The protein lacks chitinase activity and is secreted by activated macrophages, chondrocytes, neutrophils and synovial cells. The protein is thought to play a role in the process of inflammation and tissue remodeling.
<b>Form</b>	25 mM Tris HCl, pH 7.3, 100 mM glycine, 10% glycerol.
<b>Bio-activity</b>	Binding assay
<b>Molecular Mass</b>	42.4 kDa
<b>AA Sequence</b>	MGVKASQTGFVVLVLLQCCSAYKLVLCYYTSWSQYREGDGSCFPDALDRFLCTHIY SFANISNDHIDTWE WNDVTLYGMLNTLKNRNPNLKTLLSVGGWNFGSQRFSKIASN TQSRRTFIKSVPPFLRTHGFDGLDLAWL YPGRRDKQHFTTLIKEMKAEFIKEAQP GK

 Tel: 1-631-559-9269    1-516-512-3133

 Email: [info@creative-biomart.com](mailto:info@creative-biomart.com)     Fax: 1-631-938-8127

 45-1 Ramsey Road, Shirley, NY 11967, USA

KQLLLSAALSAGKVTIDSSYDIAKISQHLD FISIMTYDFHG AWRGTTGHH SPLFRGQE  
 DASPDRFSNTDYAVGYMLRLGAPASKLVMGIPTFGRSFTLASSETGVGAPISG PGIP  
 GRFTKEAGTLAYYEICDFLRGATVHRILGQQVPYATKGNQWVG YDDQESVKSKVQY  
 LKDRQLAGAM  
 VWALDLDDFQGSFCGQDLRFPLTNAIKDALAATTRTRPLEQKLISEEDLAANDILDYK  
 DDDDKV

<b>Purity</b>	> 80% as determined by SDS-PAGE and Coomassie blue staining.
<b>Stability</b>	Stable for 12 months from the date of receipt of the product under proper storage and handling conditions. Avoid repeated freeze-thaw cycles.
<b>Storage</b>	Store at -80 centigrade.
<b>Concentration</b>	>50 ug/mL as determined by microplate BCA method.
<b>Preparation</b>	Recombinant protein was captured through anti-DDK affinity column followed by conventional chromatography steps.
<b>Protein Families</b>	Secreted Protein
<b>Full Length</b>	Full L.

## GENE INFORMATION

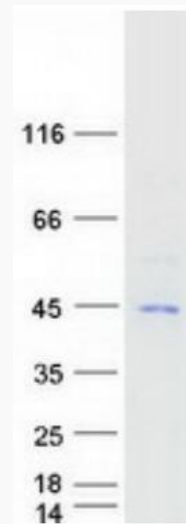
<b>Gene Name</b>	CHI3L1 chitinase 3 like 1 [ Homo sapiens (human) ]
<b>Official Symbol</b>	CHI3L1
<b>Synonyms</b>	GP39; ASRT7; GP-39; YK-40; YKL40; CGP-39; YKL-40; YYL-40; HC-gp39; HCGP-3P; hCGP-39

 Tel: 1-631-559-9269 1-516-512-3133

 Email: [info@creative-biomart.com](mailto:info@creative-biomart.com)  Fax: 1-631-938-8127

 45-1 Ramsey Road, Shirley, NY 11967, USA

Gene ID	1116
mRNA Refseq	NM_001276.4
Protein Refseq	NP_001267.2
MIM	601525
UniProt ID	P36222



Coomassie blue staining of purified CHI3L1 protein.

Tel: 1-631-559-9269 1-516-512-3133

Email: [info@creative-biomart.com](mailto:info@creative-biomart.com) Fax: 1-631-938-8127

45-1 Ramsey Road, Shirley, NY 11967, USA