

Active Recombinant Human CHI3L1 protein, His-tagged

Cat. No. CHI3L1-657H Lot. No. (See product label)

SPECIFICATION

Product Overview	Active Recombinant Human CHI3L1 protein(P36222)(Tyr22-Thr383) is expressed from HEK293 with His tag at the C-Terminus.
Species	Human
Source	HEK293
ProteinLength	22-383 aa
Form	Lyophilized from 0.22µm filtered solution in PBS (pH 7.4).
Bio-activity	Immobilized Human YKL-40, His Tag at 2µg/ml (100µl/well) on the plate. Dose response curve for Anti-YKL-40 Antibody, hFc Tag with the EC50 of 38.2ng/ml determined by ELISA.
Molecular Mass	The protein has a predicted MW of 41.6 kDa. Due to glycosylation, the protein migrates to 42-50 kDa based on Bis-Tris PAGE result.
Endotoxin	Less than 1 EU per µg by the LAL method.
Purity	> 95% as determined by Bis-Tris PAGE > 95% as determined by HPLC
Storage	Store at -20 to -80°C for 12 months as supplied from date of receipt. -80°C for 3 months after reconstitution. Recommend to aliquot the protein into smaller quantities for optimal storage. Please minimize freeze-thaw cycles.

 Tel: 1-631-559-9269 1-516-512-3133

 Email: info@creative-biomart.com  Fax: 1-631-938-8127

 45-1 Ramsey Road, Shirley, NY 11967, USA

Reconstitution	Dissolve the lyophilized protein in distilled water.
protein Refseq-Weblink	http://www.ncbi.nlm.nih.gov/protein/NP_001267.2
Unit ID	P36222
Unit ID-Weblink	https://www.uniprot.org/uniprotkb/P36222

GENE INFORMATION

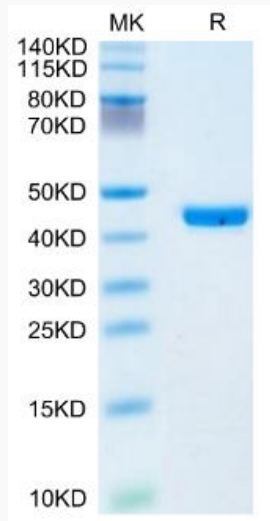
Gene Name	CHI3L1 chitinase 3-like 1 (cartilage glycoprotein-39) [Homo sapiens]
Official Symbol	CHI3L1
Synonyms	CHI3L1; chitinase 3-like 1 (cartilage glycoprotein-39); chitinase-3-like protein 1; GP39; YKL40; 39 kDa synovial protein; cartilage glycoprotein 39; ASRT7; GP-39; CGP-39; YKL-40; YYL-40; HC-gp39; HCGP-3P; hCGP-39; FLJ38139; DKFZp686N19119;
Gene ID	1116
mRNA Refseq	NM_001276
protein Refseq	NP_001267
MIM	601525

 Tel: 1-631-559-9269 1-516-512-3133

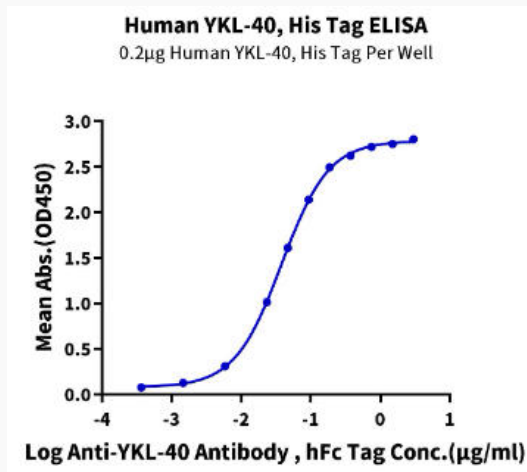
 Email: info@creative-biomart.com  Fax: 1-631-938-8127

 45-1 Ramsey Road, Shirley, NY 11967, USA

Bis-Tris PAGE



ELISA Data



Tel: 1-631-559-9269 1-516-512-3133

Email: info@creative-biomart.com Fax: 1-631-938-8127

45-1 Ramsey Road, Shirley, NY 11967, USA