

## Recombinant Human CHI3L1 protein, His & T7-tagged

**Cat. No.** CHI3L1-6990H    **Lot. No.** (See product label)

### SPECIFICATION

<b>Product Overview</b>	Recombinant Human CHI3L1 aa. (Asn112~Lys377 (Accession # P36222)) fused with N-terminal His & T7 tag was produced in E. coli cells.
<b>Species</b>	Human
<b>Source</b>	E.coli
<b>ProteinLength</b>	Asn112~Lys377
<b>Description</b>	Chitinases catalyze the hydrolysis of chitin, which is an abundant glycopolymer found in insect exoskeletons and fungal cell walls. The glycoside hydrolase 18 family of chitinases includes eight human family members. This gene encodes a glycoprotein member of the glycosyl hydrolase 18 family. The protein lacks chitinase activity and is secreted by activated macrophages, chondrocytes, neutrophils and synovial cells. The protein is thought to play a role in the process of inflammation and tissue remodeling.
<b>Form</b>	Freeze-dried powder
<b>Molecular Mass</b>	Predicted Molecular Mass: 33.0kDa
<b>Endotoxin</b>	<1.0EU per 1ug (determined by the LAL method)
<b>Purity</b>	>95%

 Tel: 1-631-559-9269    1-516-512-3133

 Email: [info@creative-biomart.com](mailto:info@creative-biomart.com)     Fax: 1-631-938-8127

 45-1 Ramsey Road, Shirley, NY 11967, USA

<b>Characteristic</b>	The isoelectric point is 9.3.
<b>Applications</b>	SDS-PAGE; WB; ELISA; IP
<b>Stability</b>	The thermal stability is described by the loss rate. The loss rate was determined by accelerated thermal degradation test, that is, incubate the protein at 37°C for 48h, and no obvious degradation and precipitation were observed. The loss rate is less than 5% within the expiration date under appropriate storage condition.
<b>Storage</b>	Avoid repeated freeze/thaw cycles. Store at 2-8°C for one month. Aliquot and store at -80°C for 12 months.
<b>Storage buffer</b>	Supplied as lyophilized form in PBS, pH7.4, containing 5% sucrose, 0.01% sarcosyl.
<b>Reconstitution</b>	Reconstitute in sterile PBS, pH7.2-pH7.4.

## GENE INFORMATION

<b>Gene Name</b>	CHI3L1 chitinase 3 like 1 [ Homo sapiens (human) ]
<b>Official Symbol</b>	CHI3L1
<b>Synonyms</b>	CHI3L1; chitinase 3 like 1; GP39; ASRT7; GP-39; YKL40; CGP-39; YKL-40; YYL-40; HC-gp39; HCGP-3P; hCGP-39; chitinase-3-like protein 1; 39 kDa synovial protein; cartilage glycoprotein 39; chitinase 3-like 1 (cartilage glycoprotein-39)
<b>Gene ID</b>	1116
<b>mRNA Refseq</b>	NM_001276.2
<b>Protein Refseq</b>	NP_001267.2

 Tel: 1-631-559-9269 1-516-512-3133

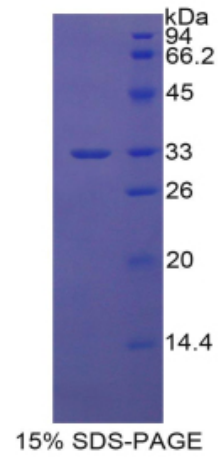
 Email: [info@creative-biomart.com](mailto:info@creative-biomart.com)  Fax: 1-631-938-8127

 45-1 Ramsey Road, Shirley, NY 11967, USA

UniProt ID

P36222

SDS-PAGE



 Tel: 1-631-559-9269 1-516-512-3133

 Email: [info@creative-biomart.com](mailto:info@creative-biomart.com)  Fax: 1-631-938-8127

 45-1 Ramsey Road, Shirley, NY 11967, USA