

Recombinant Human CHI3L1 protein, myc-His-tagged

Cat. No. CHI3L1-7262H **Lot. No.** (See product label)

SPECIFICATION

Product Overview	Recombinant Human CHI3L1(1-383aa) fused with myc-His tag at C-terminal was expressed in CHO.
Species	Human
Source	CHO
ProteinLength	1-383 a.a.
Description	Chitinases catalyze the hydrolysis of chitin, which is an abundant glycopolymer found in insect exoskeletons and fungal cell walls. The glycoside hydrolase 18 family of chitinases includes eight human family members. CHI3L1 is a glycoprotein member of the glycosyl hydrolase 18 family. The protein lacks chitinase activity and is secreted by activated macrophages, chondrocytes, neutrophils and synovial cells. This protein is thought to play a role in the process of inflammation and tissue remodeling.
Form	Liquid. in Phosphate-Buffered Saline (pH 7.4)
Molecular Mass	45.5 kDa(408aa)
AA Sequence	MGVKASQTGFVVLVLLQCCSAYKLVCCYYTSWSQYREGDGSCFPDALDRFLCTHIIY SFANISNDHIDTWEWNDVTLYGMLNLTKNRNPNLKTLSSVGGWNFGSQRFASKIASN TQSRRTFIKSVPPFLRTHGFDGLDLAWLYPGRRDKQHFTTLIKEMKAEFIKEAQP GK KQLLLSAALSAGKVTIDSSYDIAKISQHLDFISIMTYDFHGAWRGTTGHHSPFRGQE DASPDRFSNTDYAVGYMLRLGAPASKLVMGIPTFGRSFTLASSETGVGAPISGPGIP

 Tel: 1-631-559-9269 1-516-512-3133

 Email: info@creative-biomart.com  Fax: 1-631-938-8127

 45-1 Ramsey Road, Shirley, NY 11967, USA

GRFTKEAGTLAYYEICDFLRGATVHRILGQQVPYATKGNQWVGYYDDQESVKSQVQY
 LKDRQLAGAMVWALDLDLDFQGSFCGQDLRF PLTNAIKDAL AATKLGPEQK LISEE
 DLNSA VDHHHHHH

Endotoxin < 1.0 EU per 1 microgram of protein (determined by LAL method)

Purity > 90% by SDS - PAGE

Storage Can be stored at +4 centigrade short term (1-2 weeks). For long term storage, aliquot and store at -20 centigrade or -70 centigrade. Avoid repeated freezing and thawing cycles.

Concentration 0.25 mg/ml (determined by Bradford assay)

GENE INFORMATION

Gene Name CHI3L1 chitinase 3-like 1 (cartilage glycoprotein-39) [Homo sapiens]

Official Symbol CHI3L1

Synonyms CHI3L1; chitinase 3-like 1 (cartilage glycoprotein-39); chitinase-3-like protein 1; GP39; YKL40; 39 kDa synovial protein; cartilage glycoprotein 39; ASRT7; GP-39; CGP-39; YKL-40; YYL-40; HC-gp39; HCGP-3P; hCGP-39; FLJ38139; DKFZp686N19119;

Gene ID 1116

mRNA Refseq NM_001276

Protein Refseq NP_001267

MIM 601525

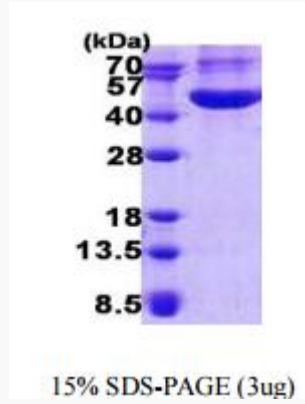
 Tel: 1-631-559-9269 1-516-512-3133

 Email: info@creative-biomart.com  Fax: 1-631-938-8127

 45-1 Ramsey Road, Shirley, NY 11967, USA

UniProt ID

P36222



 Tel: 1-631-559-9269 1-516-512-3133

 Email: info@creative-biomart.com  Fax: 1-631-938-8127

 45-1 Ramsey Road, Shirley, NY 11967, USA