

## Recombinant Human CHI3L2 Protein, GST-Tagged

**Cat. No.** CHI3L2-1233H    **Lot. No.** (See product label)

### SPECIFICATION

<b>Product Overview</b>	Human CHI3L2 full-length ORF (AAH11460.1, 1 a.a. - 390 a.a.) recombinant protein with GST-tag at N-terminal.
<b>Species</b>	Human
<b>Source</b>	Wheat Germ
<b>Description</b>	The protein encoded by this gene is similar to bacterial chitinases but lacks chitinase activity. The encoded protein is secreted and is involved in cartilage biogenesis. Several transcript variants encoding different isoforms have been found for this gene. [provided by RefSeq, Apr 2012]
<b>Molecular Mass</b>	68.53 kDa
<b>AA Sequence</b>	MGATTMDQKSLWAGVVVLLLLQGGSAYKLVCFYFTNWSQDRQEPGKFTPENIDPFL CSHLIYSFASIENNKVVIKDKSEVMPLYQTINSLKTKNPKLKILLSIGGYLFGSKGFHPMV DSSTRLEFINSIILFLRNHNFDGLDVSWIYPDQKENTHFTVLIHELAEAFQKDFTKST KERLLLTVGVSAGRQ MIDNSYQVEKLA KDLD FINLLSFDHGSWEKPLITGHNSPLSK GWQDRGPSSYYNVEYAVGYWIHKMPSEKVV MGIPTYGHSFTLASAETT VGAPAS GPGAAGPITESSGFLAYYEICQFLKGAKITRLQDQVPYAVKGNQWVGYYDDVKSME TKVQFLKLN LNLGGAMIWSIDMDDFTGKSCNQGPYPLVQAVKRS LGSL
<b>Applications</b>	Enzyme-linked Immunoabsorbent Assay Western Blot (Recombinant protein) Antibody Production

 Tel: 1-631-559-9269    1-516-512-3133

 Email: [info@creative-biomart.com](mailto:info@creative-biomart.com)     Fax: 1-631-938-8127

 45-1 Ramsey Road, Shirley, NY 11967, USA

## Protein Array

<b>Storage</b>	Store at -80 centigrade. Aliquot to avoid repeated freezing and thawing.
<b>Storage Buffer</b>	50 mM Tris-HCl, 10 mM reduced Glutathione, pH=8.0 in the elution buffer.

## GENE INFORMATION

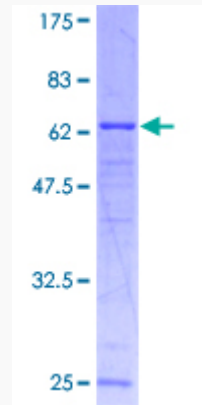
<b>Gene Name</b>	CHI3L2 chitinase 3-like 2 [ Homo sapiens ]
<b>Official Symbol</b>	CHI3L2
<b>Synonyms</b>	CHI3L2; chitinase 3-like 2; chitinase-3-like protein 2; YKL 39; YKL39; chondrocyte protein 39; YKL-39;
<b>Gene ID</b>	1117
<b>mRNA Refseq</b>	NM_001025197
<b>Protein Refseq</b>	NP_001020368
<b>MIM</b>	601526
<b>UniProt ID</b>	Q15782

 Tel: 1-631-559-9269 1-516-512-3133

 Email: [info@creative-biomart.com](mailto:info@creative-biomart.com)  Fax: 1-631-938-8127

 45-1 Ramsey Road, Shirley, NY 11967, USA

**Quality Control  
Testing**



12.5% SDS-PAGE Stained with Coomassie Blue.

 Tel: 1-631-559-9269 1-516-512-3133

 Email: [info@creative-biomart.com](mailto:info@creative-biomart.com)  Fax: 1-631-938-8127

 45-1 Ramsey Road, Shirley, NY 11967, USA