

Recombinant Full Length Human CHI3L2 Protein, C-Flag-tagged

Cat. No. CHI3L2-1554HFL **Lot. No.** (See product label)

SPECIFICATION

Product Overview	Recombinant Full Length Human CHI3L2 Protein, fused to Flag-tag at C-terminus, was expressed in Mammalian cells.
Species	Human
Source	Mammalian Cells
Description	The protein encoded by this gene is similar to bacterial chitinases but lacks chitinase activity. The encoded protein is secreted and is involved in cartilage biogenesis. Several transcript variants encoding different isoforms have been found for this gene.
Form	25 mM Tris HCl, pH 7.3, 100 mM glycine, 10% glycerol.
Molecular Mass	43.3 kDa
AA Sequence	<p>MGATTMDQKSLWAGVVVLLLLQGGSAYKLVICYFTNWSQDRQEPGKFTPENIDPFL CSHLIYSFASIENNK VIKDKSEVMLYQTINSLKTKNPKLKILLSIGGYLFGSKGFHPMV DSSTSRLIFINSIILFLRNHNFDGL DVSWIYPDQKENTHFTVLIHELAEAFQKDFTKST KERLLLTVGVSAQRQMIDNSYQVEKLAKDLDFINLL SFDFHGSWEKPLITGHNSPLS KGWQDRGPSSYYNVEYAVGYWIHKGMPSEKVVVMGIPTYGHSFTLASAET TVGAPA SGPGAAGPITESSGFLAYYEICQFLKGAKITRLQDQQVPYAVKGNQWVGYYDDVKSM ETKVQFLK NLNLGGAMIWSIDMDDFTGKSCNQGPYPLVQAVKRSLGSLTRTRPLEQKLISEEDLA ANDILDYKDDDDKV</p>

 Tel: 1-631-559-9269 1-516-512-3133

 Email: info@creative-biomart.com  Fax: 1-631-938-8127

 45-1 Ramsey Road, Shirley, NY 11967, USA



Purity	> 80% as determined by SDS-PAGE and Coomassie blue staining.
Stability	Stable for 12 months from the date of receipt of the product under proper storage and handling conditions. Avoid repeated freeze-thaw cycles.
Storage	Store at -80 centigrade.
Concentration	>50 ug/mL as determined by microplate BCA method.
Preparation	Recombinant protein was captured through anti-DDK affinity column followed by conventional chromatography steps.
Full Length	Full L.

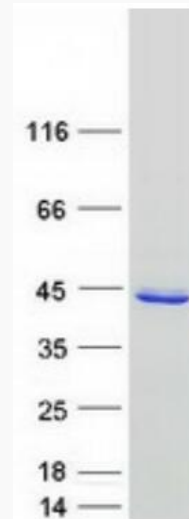
GENE INFORMATION

Gene Name	CHI3L2 chitinase 3 like 2 [Homo sapiens (human)]
Official Symbol	CHI3L2
Synonyms	CHIL2; YKL39; YKL-39
Gene ID	1117
mRNA Refseq	NM_004000.3
Protein Refseq	NP_003991.2
MIM	601526
UniProt ID	Q15782

Tel: 1-631-559-9269 1-516-512-3133

Email: info@creative-biomart.com Fax: 1-631-938-8127

45-1 Ramsey Road, Shirley, NY 11967, USA



Coomassie blue staining of purified CHI3L2 protein.

Tel: 1-631-559-9269 1-516-512-3133

Email: info@creative-biomart.com Fax: 1-631-938-8127

45-1 Ramsey Road, Shirley, NY 11967, USA