

Recombinant Human CHI3L2 protein, His & T7-tagged

Cat. No. CHI3L2-1674H Lot. No. (See product label)

SPECIFICATION

Product Overview	Recombinant Human CHI3L2 aa. (Tyr27~Tyr326 (Accession # Q15782)) fused with N-terminal His & T7 tag was produced in E. coli cells.
Species	Human
Source	E.coli
ProteinLength	Tyr27~Tyr326
Description	The protein encoded by this gene is similar to bacterial chitinases but lacks chitinase activity. The encoded protein is secreted and is involved in cartilage biogenesis. Several transcript variants encoding different isoforms have been found for this gene.
Form	Freeze-dried powder
Molecular Mass	Predicted Molecular Mass: 37.4kDa
Endotoxin	<1.0EU per 1ug (determined by the LAL method)
Purity	>90%
Applications	SDS-PAGE; WB; ELISA; IP.
Stability	The thermal stability is described by the loss rate. The loss rate was determined by accelerated thermal degradation test, that is, incubate the protein at 37°C for 48h,

 Tel: 1-631-559-9269 1-516-512-3133

 Email: info@creative-biomart.com  Fax: 1-631-938-8127

 45-1 Ramsey Road, Shirley, NY 11967, USA

and no obvious degradation and precipitation were observed. The loss rate is less than 5% within the expiration date under appropriate storage condition.

Storage

Avoid repeated freeze/thaw cycles. Store at 2-8°C for one month. Aliquot and store at -80°C for 12 months.

Storage buffer

Supplied as lyophilized form in PBS, pH7.4, containing 5% trehalose, 0.01% sarcosyl.

Reconstitution

Reconstitute in sterile PBS, pH7.2-pH7.4.

Isoelectric Point

6.9

GENE INFORMATION

Gene Name

CHI3L2 chitinase 3 like 2 [Homo sapiens (human)]

Official Symbol

CHI3L2

Synonyms

CHI3L2; chitinase 3 like 2; CHIL2; YKL39; YKL-39; chitinase-3-like protein 2; chondrocyte protein 39

Gene ID

1117

mRNA Refseq

NM_001025197.1

Protein Refseq

NP_001020368.1

UniProt ID

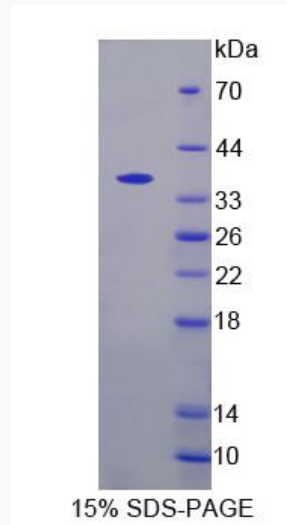
Q15782

 Tel: 1-631-559-9269 1-516-512-3133

 Email: info@creative-biomart.com  Fax: 1-631-938-8127

 45-1 Ramsey Road, Shirley, NY 11967, USA

SDS-PAGE



 Tel: 1-631-559-9269 1-516-512-3133

 Email: info@creative-biomart.com  Fax: 1-631-938-8127

 45-1 Ramsey Road, Shirley, NY 11967, USA