

Recombinant Human CHI3L2 Protein (Tyr27-Leu390), C-His tagged

Cat. No. CHI3L2-1717H Lot. No. (See product label)

SPECIFICATION

Product Overview	Recombinant human CHI3L2 (Tyr27-Leu390) fused with C-terminal His tag was expressed in Mammalian cells.
Species	Human
Source	Mammalian Cells
ProteinLength	Tyr27-Leu390
Form	Lyophilized powder/frozen liquid
Molecular Mass	40.04 kDa
Purity	>90% as determined by SDS-PAGE
Notes	For research use only.
Storage	Use a manual defrost freezer and avoid repeated freeze thaw cycles. Store at 2 to 8 centigrade for one week. Store at -20 to -80 centigrade for twelve months from the date of receipt.
Storage Buffer	Supplied as solution form in PBS or lyophilized from PBS.
Reconstitution	Reconstitute in sterile water for a stock solution.

 Tel: 1-631-559-9269 1-516-512-3133

 Email: info@creative-biomart.com  Fax: 1-631-938-8127

 45-1 Ramsey Road, Shirley, NY 11967, USA

Shipping

They are shipped out with dry ice/blue ice unless customers require otherwise.

GENE INFORMATION**Gene Name**

CHI3L2 chitinase 3-like 2 [Homo sapiens (human)]

Official Symbol

CHI3L2

Synonyms

CHI3L2; chitinase 3-like 2; chitinase-3-like protein 2; YKL 39; YKL39; chondrocyte protein 39; YKL-39;

Gene ID

1117

mRNA Refseq

NM_001025197

Protein Refseq

NP_001020368

MIM

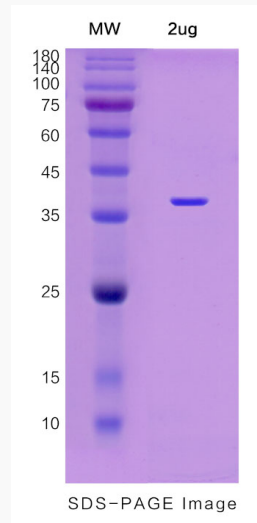
601526

UniProt ID

Q15782

 Tel: 1-631-559-9269 1-516-512-3133 Email: info@creative-biomart.com  Fax: 1-631-938-8127 45-1 Ramsey Road, Shirley, NY 11967, USA

SDS-PAGE



 Tel: 1-631-559-9269 1-516-512-3133

 Email: info@creative-biomart.com  Fax: 1-631-938-8127

 45-1 Ramsey Road, Shirley, NY 11967, USA