

Recombinant Human CHI3L2 Protein, Myc/DDK-tagged, C13 and N15-labeled

Cat. No. CHI3L2-1803H Lot. No. (See product label)

SPECIFICATION

Product Overview

CHI3L2 MS Standard C13 and N15-labeled recombinant protein (NP_001020370) with a C-terminal MYC/DDK tag, was expressed in HEK293 cells.

Species

Human

Source

HEK293

Description

The protein encoded by this gene is similar to bacterial chitinases but lacks chitinase activity. The encoded protein is secreted and is involved in cartilage biogenesis. Several transcript variants encoding different isoforms have been found for this gene.

Molecular Mass

43.5 kDa

AA Sequence

MGATTMDQKSLWAGVVVLLLLQGGSAYKLVICYFTNWSQDRQEPGKFTPENIDPFL
 CSHLIYSFASIENNKVVIKDKSEVMLYQTINSLKTKNPKLKILLSIGGYLFGSKGFHPMV
 DSSTSRLEFINSIILFLRNHNFDGLDVSWIYPDQKENTHFTVLIHELAEAFQKDFTKST
 KERLLLTVGVSAGRQ MIDNSYQVEKLAKDLD FINLLSFDHGSWEKPLITGHNSPLSK
 GWQDRGPSSYYNVEYAVGYWIHKMPSEKVV MGIPTYGHSFTLASAETT VGAPAS
 GPGAAGPITESSGFLAYYEICQFLKGAKITRLQDQVPYAVKGNQWVG YDDVKSM E
 TKVQFLKLN LN LGGAMIWSIDMDDFTGKSCNQGPYPLVQAVKRSLSL TRTRPLEQK
 LISEEDLAANDILDYKDDDDKV

Purity

> 80% as determined by SDS-PAGE and Coomassie blue staining

 Tel: 1-631-559-9269 1-516-512-3133

 Email: info@creative-biomart.com  Fax: 1-631-938-8127

 45-1 Ramsey Road, Shirley, NY 11967, USA



Stability	Stable for 3 months from receipt of products under proper storage and handling conditions.
Storage	Store at -80 centigrade. Avoid repeated freeze-thaw cycles.
Concentration	50 µg/mL as determined by BCA
Storage Buffer	100 mM glycine, 25 mM Tris-HCl, pH 7.3.

GENE INFORMATION

Gene Name	CHI3L2 chitinase 3-like 2 [Homo sapiens (human)]
Official Symbol	CHI3L2
Synonyms	CHI3L2; chitinase 3-like 2; chitinase-3-like protein 2; YKL 39; YKL39; chondrocyte protein 39; YKL-39;
Gene ID	1117
mRNA Refseq	NM_001025199
Protein Refseq	NP_001020370
MIM	601526
UniProt ID	Q15782

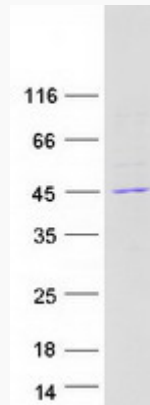
Tel: 1-631-559-9269 1-516-512-3133

Email: info@creative-biomart.com Fax: 1-631-938-8127

45-1 Ramsey Road, Shirley, NY 11967, USA



SDS-PAGE



Tel: 1-631-559-9269 1-516-512-3133

Email: info@creative-biomart.com Fax: 1-631-938-8127

45-1 Ramsey Road, Shirley, NY 11967, USA