

Recombinant Human CHIA Protein, GST-Tagged

Cat. No. CHIA-1234H **Lot. No.** (See product label)

SPECIFICATION

Product Overview	Human CHIA full-length ORF (NP_068569.2, 1 a.a. - 368 a.a.) recombinant protein with GST-tag at N-terminal.
Species	Human
Source	Wheat Germ
Description	The protein encoded by this gene degrades chitin, which is found in the cell wall of most fungi as well as in arthropods and some nematodes. The encoded protein can also stimulate interleukin 13 expression, and variations in this gene can lead to asthma susceptibility. Several transcript variants encoding a few different isoforms have been found for this gene. [provided by RefSeq, Apr 2012]
Molecular Mass	66.5 kDa
AA Sequence	MVSTPENRQTFITSVIKFLRQYEFDGLDFDWEYPGSRGSPQDKHLFTVLVQEMRE AFEQEAKQINKPRLMVTAAVAAGISNIQSGYEIPQLSQYLDYIHVMTYDLHGSGWEGY TGENSPYKYPTDTGSNAYLNVDYVMNYWKDNGAPAEKLIVGFPTYGHNFILSNPS NTGIGAPTSGAGPAGPYAKESGIWAYYEICTFLKNGATQGWDPQEVPIYAYQGNV WVGYDNIKSFDIKAQWLKHNKFGGAMVWAILDDFTGTFCNQGKFPLISTLKKALGL QSASCTAPAQPIEPITAAPSGSGNGSGSSSSGGSSGGSGFC AVRANGLYPVANNR NAFWHCVNGVTYQQNCQAGLVFDTS DCCNWA
Applications	Enzyme-linked Immunoabsorbent Assay Western Blot (Recombinant protein)

 Tel: 1-631-559-9269 1-516-512-3133

 Email: info@creative-biomart.com  Fax: 1-631-938-8127

 45-1 Ramsey Road, Shirley, NY 11967, USA

Antibody Production
Protein Array

Storage Store at -80 centigrade. Aliquot to avoid repeated freezing and thawing.

Storage Buffer 50 mM Tris-HCl, 10 mM reduced Glutathione, pH=8.0 in the elution buffer.

GENE INFORMATION

Gene Name CHIA chitinase, acidic [Homo sapiens]

Official Symbol CHIA

Synonyms CHIA; chitinase, acidic; acidic mammalian chitinase; AMCcase; CHIT2; TSA1902; lung-specific protein TSA1902; AMCASE; DKFZp313J1722;

Gene ID 27159

mRNA Refseq NM_001040623

Protein Refseq NP_001035713

MIM 606080

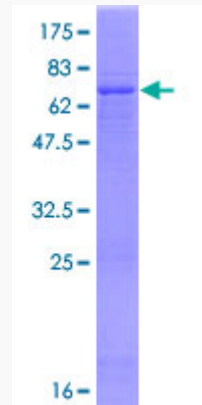
UniProt ID Q9BZP6

 Tel: 1-631-559-9269 1-516-512-3133

 Email: info@creative-biomart.com  Fax: 1-631-938-8127

 45-1 Ramsey Road, Shirley, NY 11967, USA

**Quality Control
Testing**



12.5% SDS-PAGE Stained with Coomassie Blue.

 Tel: 1-631-559-9269 1-516-512-3133

 Email: info@creative-biomart.com  Fax: 1-631-938-8127

 45-1 Ramsey Road, Shirley, NY 11967, USA