

Recombinant Human CHID1 Protein, GST-Tagged

Cat. No. CHID1-1237H Lot. No. (See product label)

SPECIFICATION

Product Overview	Human CHID1 full-length ORF (AAH95409.1, 1 a.a. - 393 a.a.) recombinant protein with GST-tag at N-terminal.
Species	Human
Source	Wheat Germ
Description	CHID1 (Chitinase Domain Containing 1) is a Protein Coding gene. Among its related pathways are Response to elevated platelet cytosolic Ca ²⁺ . GO annotations related to this gene include hydrolase activity, hydrolyzing O-glycosyl compounds and chitinase activity.
Molecular Mass	71.4 kDa
AA Sequence	MRTLFNLLWLALACSPVHTTLSKSDAKKAASKTLLLEKSQFSDKPVQDRGLVVTDLKA ESVVLEHRSYCSAKARDRHFAGDVLGYVTPWNSHGYDVTKVFGSKFTQISPVWLQL KRRGREMFVETGLHDVDQGWMAVRKHAKGLHIVPRLLFEDWTYDDFRNVLDSED EIEELSKTVVQVAKNQHFDFVVEVWNQLLSQKRVGLIHMLTHLAEALHQARLLALL VIPPATPGTDQLGMFTHKEFEQLAPVLDGFSLMTYDYSTAHQPGPNAPLSWVRAC VQVLDPKSKWRSKILLGLNFYGM DYATSKDAREPVVGARYIQLTKDHRPRMVWDS QVSEHFFEYKKSRSRGRHVVFYPTLKSLQVRLELARELGVGVS IWELGQGLDYFYDLL
Applications	Enzyme-linked Immunoabsorbent Assay Western Blot (Recombinant protein) Antibody Production

 Tel: 1-631-559-9269 1-516-512-3133

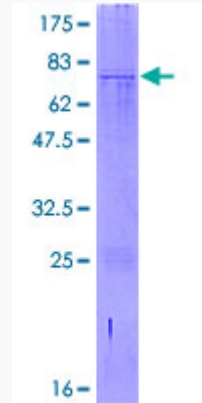
 Email: info@creative-biomart.com  Fax: 1-631-938-8127

 45-1 Ramsey Road, Shirley, NY 11967, USA

Protein Array

Storage Store at -80 centigrade. Aliquot to avoid repeated freezing and thawing.**Storage Buffer** 50 mM Tris-HCl, 10 mM reduced Glutathione, pH=8.0 in the elution buffer.**GENE INFORMATION****Gene Name** CHID1 chitinase domain containing 1 [Homo sapiens]**Official Symbol** CHID1**Synonyms** CHID1; chitinase domain containing 1; chitinase domain-containing protein 1; FLJ42707; MGC3234; stabilin-1 interacting chitinase-like protein; stabilin-1-interacting chitinase-like protein; GL008; SI-CLP;**Gene ID** 66005**mRNA Refseq** NM_001142674**Protein Refseq** NP_001136146**UniProt ID** Q9BWS9 Tel: 1-631-559-9269 1-516-512-3133 Email: info@creative-biomart.com  Fax: 1-631-938-8127 45-1 Ramsey Road, Shirley, NY 11967, USA

**Quality Control
Testing**



12.5% SDS-PAGE Stained with Coomassie Blue.

 Tel: 1-631-559-9269 1-516-512-3133

 Email: info@creative-biomart.com  Fax: 1-631-938-8127

 45-1 Ramsey Road, Shirley, NY 11967, USA